

# MONUMENT 646

## CERTIFICATE OF LOCATION OF GOVERNMENT CORNER

North Quarter Corner of Section 12, Township 28 North, Range 22 West,  
County of Ramsey, State of Minnesota.

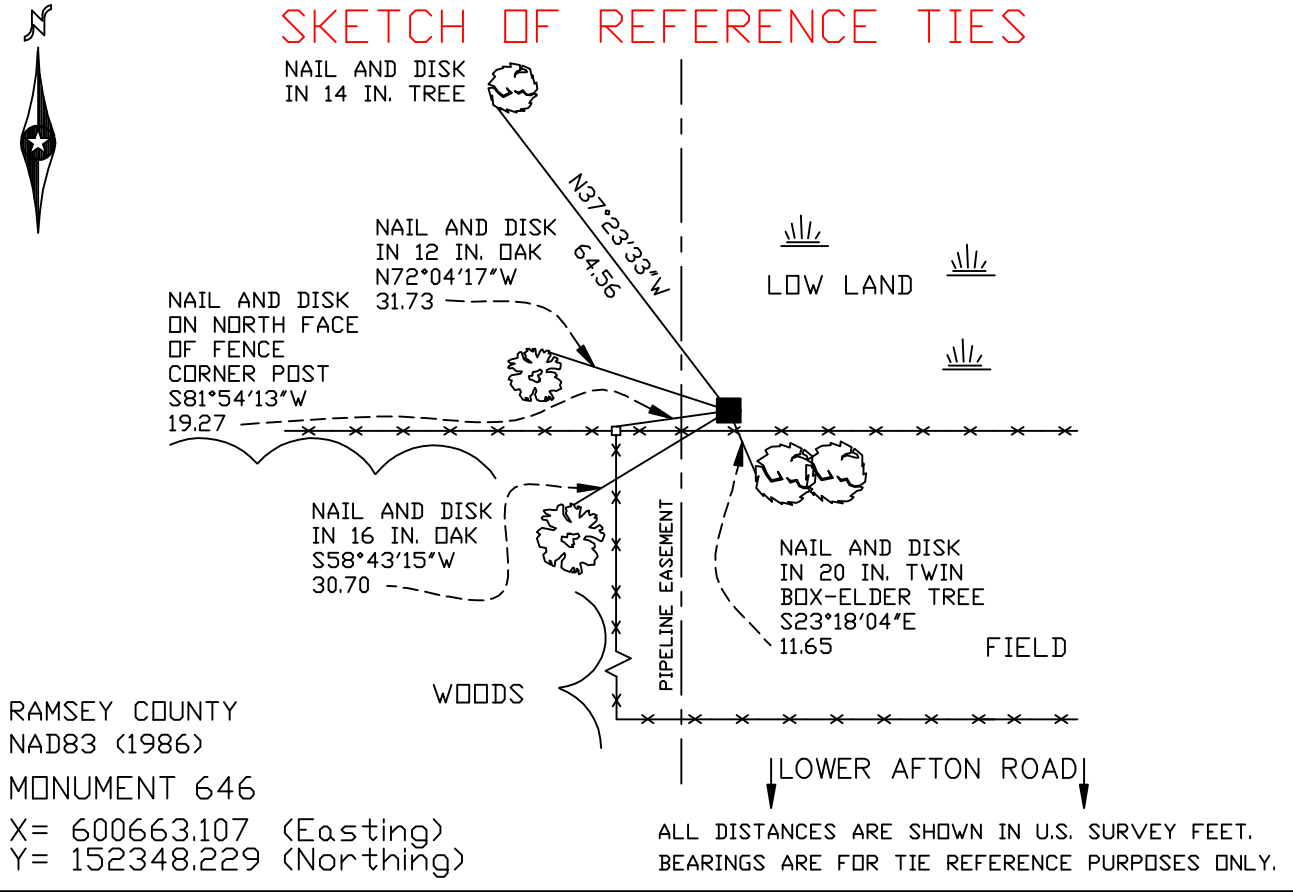
At the corner location shown on the sketch

On October 6, 2006 found a granite monument, up 6 inches.

left monument as found     lowered monument     removed monument (explain)

On \_\_\_\_\_ placed a \_\_\_\_\_

### SKETCH OF REFERENCE TIES



Statements of evidence relative to this corner are on the following page(s).

I hereby certify that this document and the data contained herein was prepared by me or under my direct supervision this \_\_\_\_\_ day of \_\_\_\_\_, 20\_\_\_\_.

\_\_\_\_\_  
SIGNATURE

Minnesota License No. \_\_\_\_\_

County Surveyor     Land Surveyor

OFFICE OF COUNTY SURVEYOR

County of Ramsey

I hereby certify that this document was filed in the County Surveyor's office on the \_\_\_\_ day of \_\_\_\_\_, 20\_\_\_\_.

David D. Claypool, P.L.S., County Surveyor

By \_\_\_\_\_, Deputy

## MONUMENT 646

**Found granite monument flush and retied, August 2, 1974.**

**Checked monument, September 22, 1988.**

**Retied granite monument, up 1 ft.; set sign and post 5.2 ft. northeast of granite monument, August 28, 1996.**

**Retied monument, October 6, 2006.**