

MONUMENT 645

CERTIFICATE OF LOCATION OF GOVERNMENT CORNER

Southwest Corner of Section 1, Township 28 North, Range 22 West, County of Ramsey, State of Minnesota.

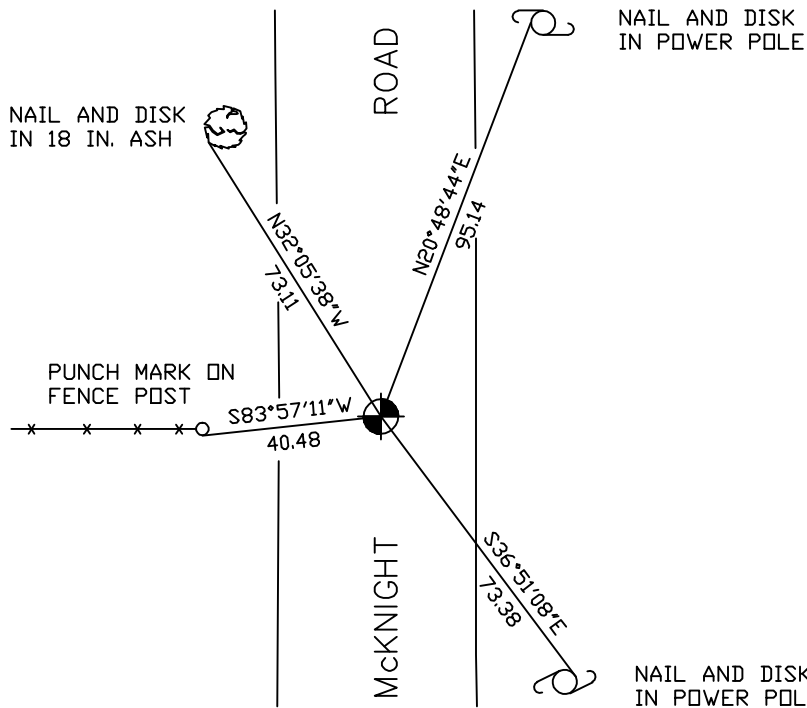
At the corner location shown on the sketch

On July 21, 2006 found a cast iron monument within a cast iron manhole assembly.

left monument as found lowered monument removed monument (explain)

On _____ placed a _____

SKETCH OF REFERENCE TIES



RAMSEY COUNTY
NAD83 (1986)
MONUMENT 645

X= 598030.535 (Easting)
Y= 152268.154 (Northing)

ALL DISTANCES ARE SHOWN IN U.S. SURVEY FEET.
BEARINGS ARE FOR TIE REFERENCE PURPOSES ONLY.

Statements of evidence relative to this corner are on the following page(s).

I hereby certify that this document and the data contained herein was prepared by me or under my direct supervision this _____ day of _____, 20____.

SIGNATURE

Minnesota License No. _____

County Surveyor Land Surveyor

OFFICE OF COUNTY SURVEYOR

County of Ramsey

I hereby certify that this document was filed in the County Surveyor's office on the ____ day of _____, 20____.

David D. Claypool, P.L.S., County Surveyor

By _____, Deputy

MONUMENT 645

Found cast iron monument set by St. Paul, no date given in field book.

Tied monument for maintenance, May 18, 1998.

Removed cast iron for maintenance; found 1½ in. iron down 2.3 ft. from road surface and 0.5 ft. south southwesterly; set 20 in. cast iron monument and cast iron manhole assembly at tie location, August 27, 1998.

Retied monument, July 21, 2006.