

MONUMENT 645N

CERTIFICATE OF LOCATION OF GOVERNMENT CORNER

Northeast Corner of the Southeast Quarter of the Southeast Quarter of Section 2, Township 28 North, Range 22 West, County of Ramsey, State of Minnesota.

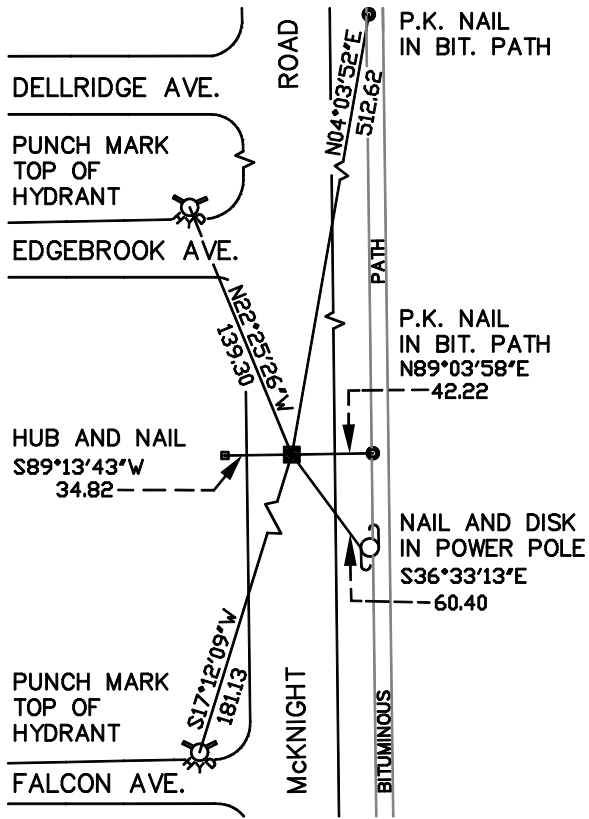
At the corner location shown on the sketch

On July 21, 2006 found a granite monument within a cast iron manhole assembly.

left monument as found, lowered monument, removed monument (explain)

On _____ placed a _____

SKETCH OF REFERENCE TIES



RAMSEY COUNTY
NAD83 (1986)
MONUMENT 645N

X= 598013.727 (Easting)
Y= 153582.682 (Northing)

ALL DISTANCES ARE SHOWN IN U.S. SURVEY FEET.
BEARINGS ARE FOR TIE REFERENCE PURPOSES ONLY.

Statements of evidence relative to this corner are on the following page(s).

I hereby certify that this document and the data contained herein was prepared by me or under my direct supervision this _____ day of _____, 20____.

SIGNATURE

Minnesota License No. _____

- County Surveyor
 Deputy County Surveyor Land Surveyor

OFFICE OF COUNTY SURVEYOR
County of Ramsey

I hereby certify that this document was filed in the County Surveyor's office on the ____ day of _____, 20____.

David D. Claypool, P.L.S., County Surveyor

By _____, Deputy

MONUMENT 645N

Granite monument exposed by road milling project. Granite monument chipped, down +/- 6 in., July 13, 1998.

Placed a 12 in. cast iron manhole assembly over granite monument and tied out, September 14, 1998.

Retied monument, July 21, 2006.