

# MONUMENT 622

## CERTIFICATE OF LOCATION OF GOVERNMENT CORNER

West Quarter Corner of Section 1, Township 28 North, Range 22 West, County of Ramsey, State of Minnesota.

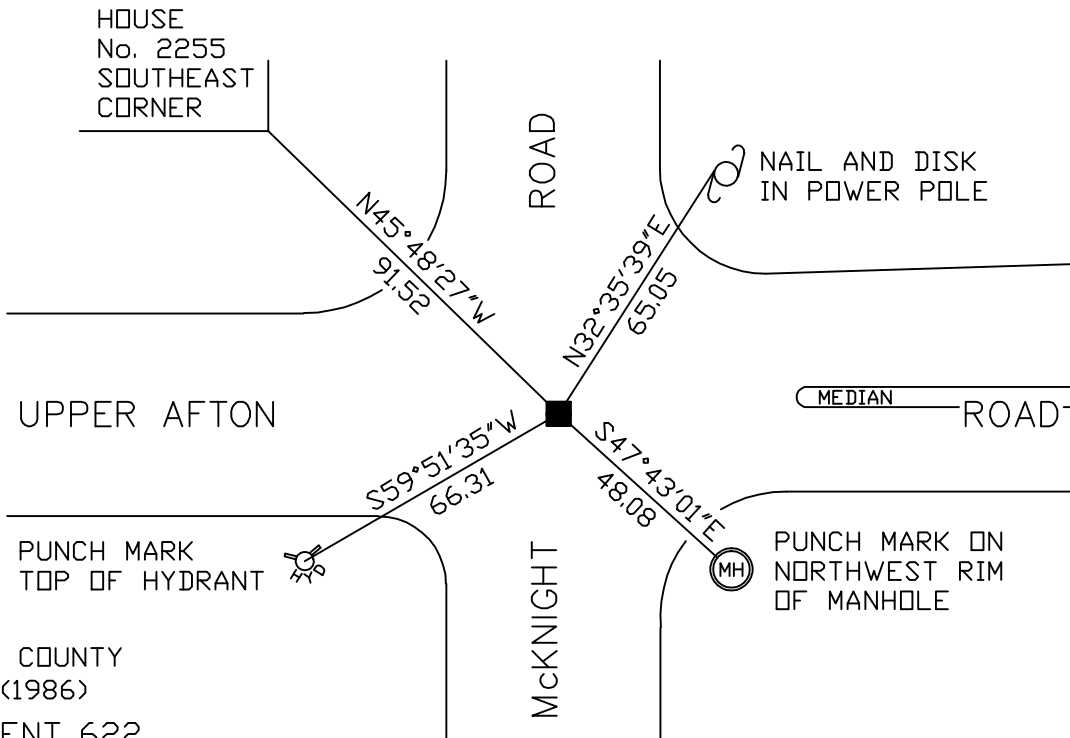
At the corner location shown on the sketch

On July 21, 2006 found a granite monument within a cast iron manhole assembly.

left monument as found     lowered monument     removed monument (explain)

On \_\_\_\_\_ placed a \_\_\_\_\_

### SKETCH OF REFERENCE TIES



RAMSEY COUNTY  
NAD83 (1986)  
MONUMENT 622

X= 597997.004 (Easting)  
Y= 154897.770 (Northing)

ALL DISTANCES ARE SHOWN IN U.S. SURVEY FEET.  
BEARINGS ARE FOR TIE REFERENCE PURPOSES ONLY.

Statements of evidence relative to this corner are on the following page(s).

I hereby certify that this document and the data contained herein was prepared by me or under my direct supervision this \_\_\_\_\_ day of \_\_\_\_\_, 20\_\_\_\_.

SIGNATURE

Minnesota License No. \_\_\_\_\_

County Surveyor     Land Surveyor

OFFICE OF COUNTY SURVEYOR

County of Ramsey

I hereby certify that this document was filed in the County Surveyor's office on the \_\_\_\_ day of \_\_\_\_\_, 20\_\_\_\_.

David D. Claypool, P.L.S., County Surveyor

By \_\_\_\_\_, Deputy

## MONUMENT 622

**Cast iron monument set to grade by City of St. Paul; retied, September 16, 1988.**

**Tied out monument for removal, May 15, 1998.**

**Removed a short cast iron monument from concrete, that was set on top of the granite monument, no date given in field book.**

**Set a cast iron manhole assembly over granite monument, August 27, 1998.**

**Retied monument, July 21, 2006.**