

# MONUMENT 58

## CERTIFICATE OF LOCATION OF GOVERNMENT CORNER

South Quarter Corner of Section 3, Township 30 North, Range 23 West, County of Ramsey, State of Minnesota.

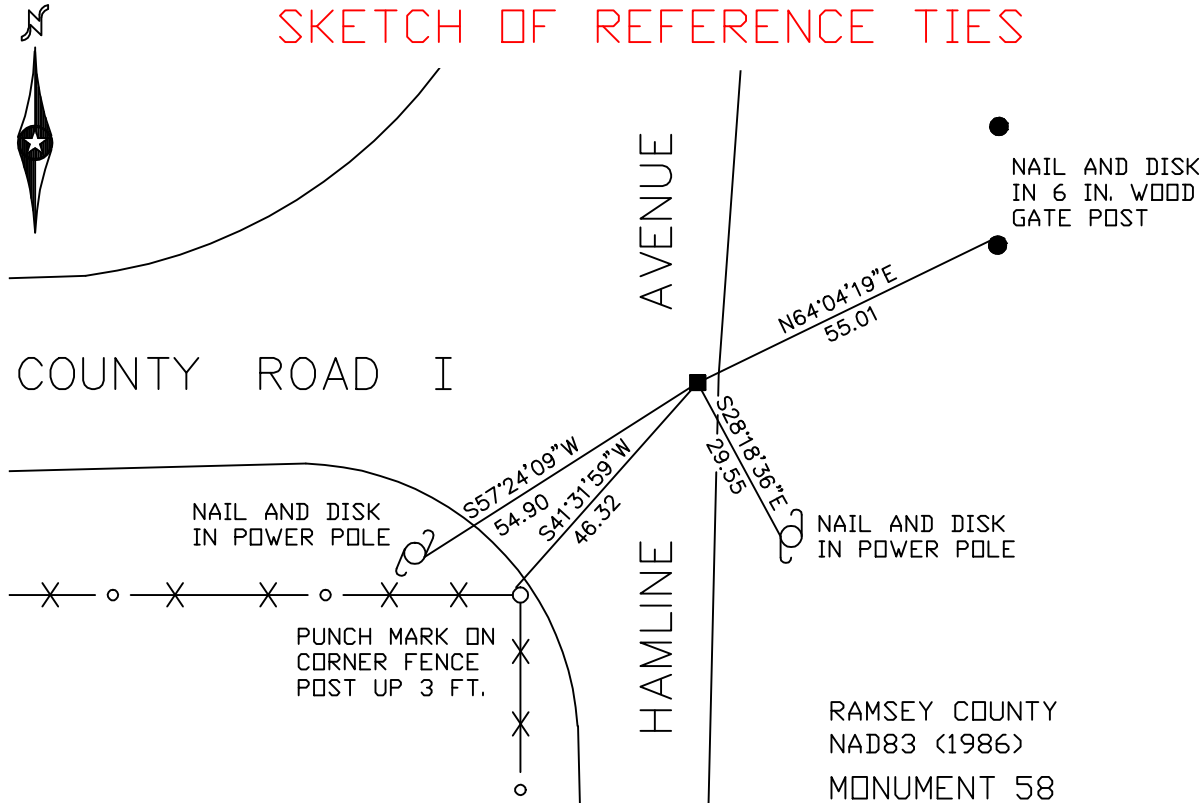
At the corner location shown on the sketch

On August 18, 2006 found a granite monument up 0.2 ft.

left monument as found     lowered monument     removed monument (explain)

On \_\_\_\_\_ placed a \_\_\_\_\_

### SKETCH OF REFERENCE TIES



ALL DISTANCES ARE SHOWN IN U.S. SURVEY FEET.  
BEARINGS ARE FOR TIE REFERENCE PURPOSES ONLY.

RAMSEY COUNTY  
NAD83 (1986)  
MONUMENT 58  
X= 558204.312 (Easting)  
Y= 215643.699 (Northing)

Statements of evidence relative to this corner are on the following page(s).

I hereby certify that this document and the data contained herein was prepared by me or under my direct supervision this \_\_\_\_\_ day of \_\_\_\_\_, 20\_\_\_\_.

SIGNATURE

Minnesota License No. \_\_\_\_\_

County Surveyor     Land Surveyor

OFFICE OF COUNTY SURVEYOR

County of Ramsey

I hereby certify that this document was filed in the County Surveyor's office on the \_\_\_\_ day of \_\_\_\_\_, 20\_\_\_\_.

David D. Claypool, P.L.S., County Surveyor

By \_\_\_\_\_, Deputy

## MONUMENT 58

**Found iron pipe over granite monument, granite monument down 8 inches, placed short (4 1/2 in.) cast iron monument and retied, November 18, 1974.**

**Found granite monument, down +/- 0.25 ft., April 2, 1990.**

**Found granite monument, up +/- 0.15 ft., tied, March 21, 2001.**

**Found granite monument, up +/- 0.2 ft., tied, August 18, 2006.**