

# MONUMENT 578

## CERTIFICATE OF LOCATION OF GOVERNMENT CORNER

East Quarter Corner of Section 36, Township 29 North, Range 22 West, County of Ramsey, State of Minnesota.

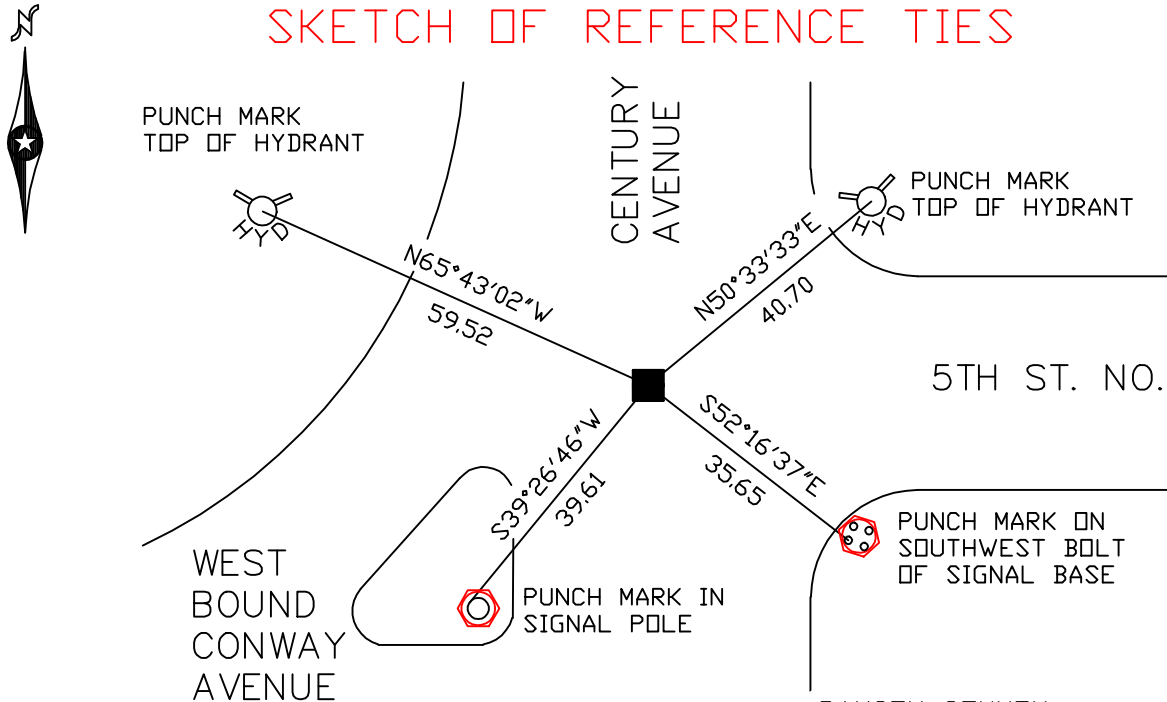
At the corner location shown on the sketch

On July 20, 2006 found a granite monument within a cast iron manhole assembly.

left monument as found     lowered monument     removed monument (explain)

On \_\_\_\_\_ placed a \_\_\_\_\_

### SKETCH OF REFERENCE TIES



RAMSEY COUNTY  
NAD83 (1986)  
MONUMENT 578

ALL DISTANCES ARE SHOWN IN U.S. SURVEY FEET.  
BEARINGS ARE FOR TIE REFERENCE PURPOSES ONLY.

X= 603201.172 (Easting)  
Y= 160362.358 (Northing)

Statements of evidence relative to this corner are on the following page(s).

I hereby certify that this document and the data contained herein was prepared by me or under my direct supervision this \_\_\_\_\_ day of \_\_\_\_\_, 20\_\_\_\_.

SIGNATURE

Minnesota License No. \_\_\_\_\_

County Surveyor     Land Surveyor

OFFICE OF COUNTY SURVEYOR

County of Ramsey

I hereby certify that this document was filed in the County Surveyor's office on the \_\_\_\_ day of \_\_\_\_\_, 20\_\_\_\_.

David D. Claypool, P.L.S., County Surveyor

By \_\_\_\_\_, Deputy

## MONUMENT 578

**Found a granite monument down 6 1/2 in; placed a short (4 5/8 in.) cast iron monument, July 8, 1975.**

**Retied monument, February 20, 1976.**

**Retied monument, down 0.17 ft., September 24, 1993.**

**Monument down 2 in., October 1, 1999.**

**Removed short cast iron monument and placed a cast iron manhole assembly over granite monument, down 0.9 ft., June 28, 2005.**

**Retied monument, July 20, 2006.**