

MONUMENT 532

CERTIFICATE OF LOCATION OF GOVERNMENT CORNER

East Quarter Corner of Section 25, Township 29 North, Range 22 West, County of Ramsey, State of Minnesota.

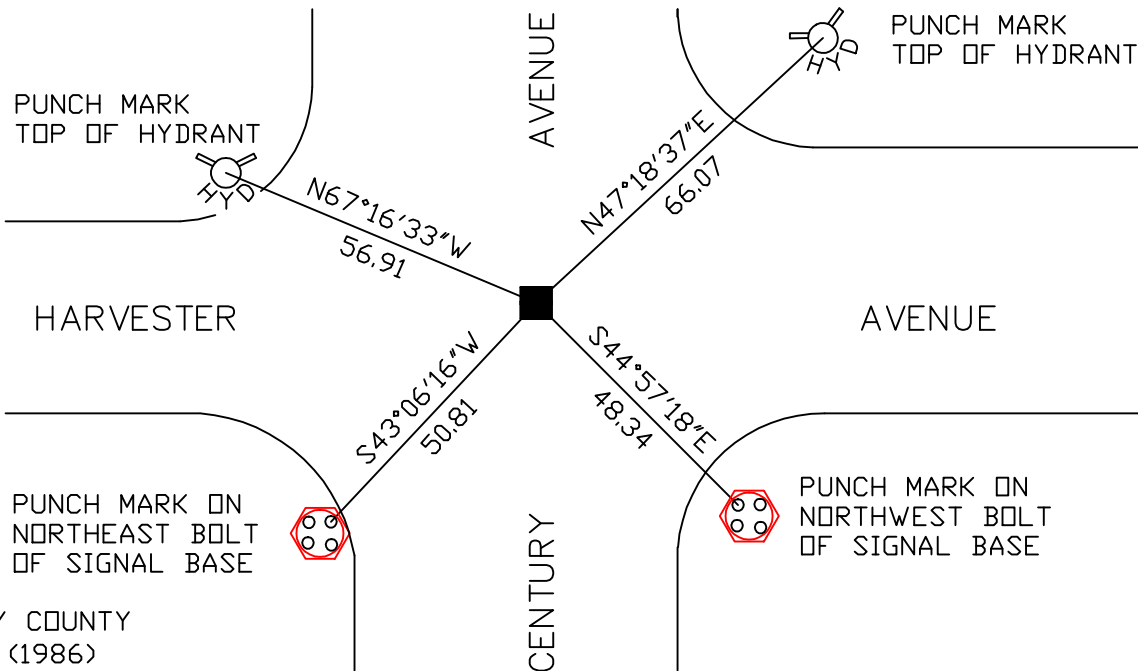
At the corner location shown on the sketch

On July 20, 2006 found a granite monument within a cast iron manhole assembly.

left monument as found lowered monument removed monument (explain)

On _____ placed a _____

SKETCH OF REFERENCE TIES



RAMSEY COUNTY
NAD83 (1986)

MONUMENT 532

X= 603134.869 (Easting)
Y= 165656.780 (Northing)

ALL DISTANCES ARE SHOWN IN U.S. SURVEY FEET.
BEARINGS ARE FOR TIE REFERENCE PURPOSES ONLY.

Statements of evidence relative to this corner are on the following page(s).

I hereby certify that this document and the data contained herein was prepared by me or under my direct supervision this _____ day of _____, 20____.

SIGNATURE

Minnesota License No. _____

County Surveyor Land Surveyor

OFFICE OF COUNTY SURVEYOR

County of Ramsey

I hereby certify that this document was filed in the County Surveyor's office on the ____ day of _____, 20____.

David D. Claypool, P.L.S., County Surveyor

By _____, Deputy

MONUMENT 532

Found iron over granite monument. Granite monument down +/- 1 ft., placed 10 in. cast iron monument, July 30, 1975.

Retied monument, February 20, 1976.

Retied monument, down 0.15 ft., September 24, 1993.

Removed 10 in. cast iron monument for road milling project. Placed cast iron manhole assembly over granite monument, June, 2005.

Retied monument, July 20, 2006.