

MONUMENT 507

CERTIFICATE OF LOCATION OF GOVERNMENT CORNER

Northwest Corner of Section 25, Township 29 North, Range 22 West, County of Ramsey, State of Minnesota.

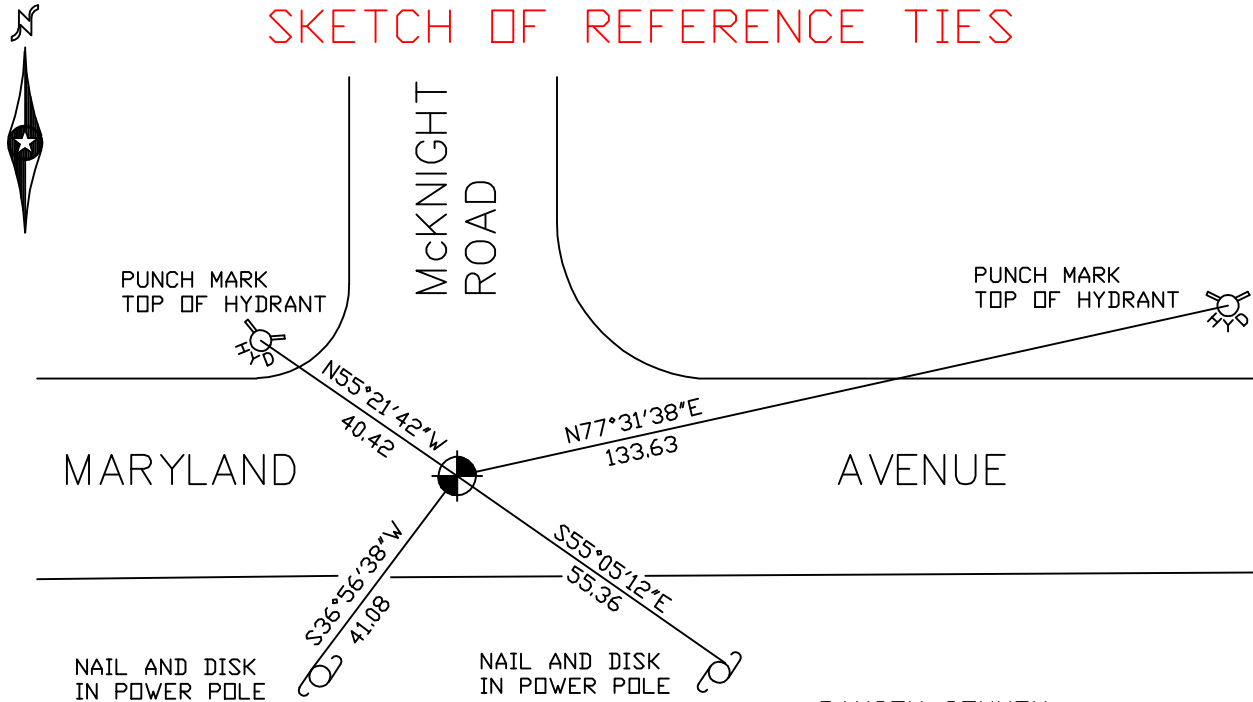
At the corner location shown on the sketch

On July 13, 2006 found a cast iron monument with top broken off.

left monument as found lowered monument removed monument (explain)

On July 13, 2006 placed a punch mark in center of round monument shaft
and straddle P.K. nails for future monument replacement.

SKETCH OF REFERENCE TIES



RAMSEY COUNTY
NAD83 (1986)
MONUMENT 507

ALL DISTANCES ARE SHOWN IN U.S. SURVEY FEET.
BEARINGS ARE FOR TIE REFERENCE PURPOSES ONLY.

X = 597882.079 (Easting)
Y = 168200.240 (Northing)

Statements of evidence relative to this corner are on the following page(s).

I hereby certify that this document and the data contained herein was prepared by me or under my direct supervision this _____ day of _____, 20____.

SIGNATURE

Minnesota License No. _____

County Surveyor Land Surveyor

OFFICE OF COUNTY SURVEYOR

County of Ramsey

I hereby certify that this document was filed in the County Surveyor's office on the ____ day of _____, 20____.

David D. Claypool, P.L.S., County Surveyor

By _____, Deputy

MONUMENT 507

Retied monument, down 0.27 ft., February 27, 1985.

Monument destroyed, Summer of 1987.

Reestablished corner position and set temporary P.K. nails; retied, December 28, 1987.

Set a 20 in. cast iron monument, October 27, 1988.

Retied monument, September 23, 1993.

Retied monument, April 14, 2003.

Retied monument, July 13, 2006.