

MONUMENT 457

CERTIFICATE OF LOCATION OF GOVERNMENT CORNER

Southeast Corner of Section 16, Township 29 North, Range 22 West, County of Ramsey, State of Minnesota.

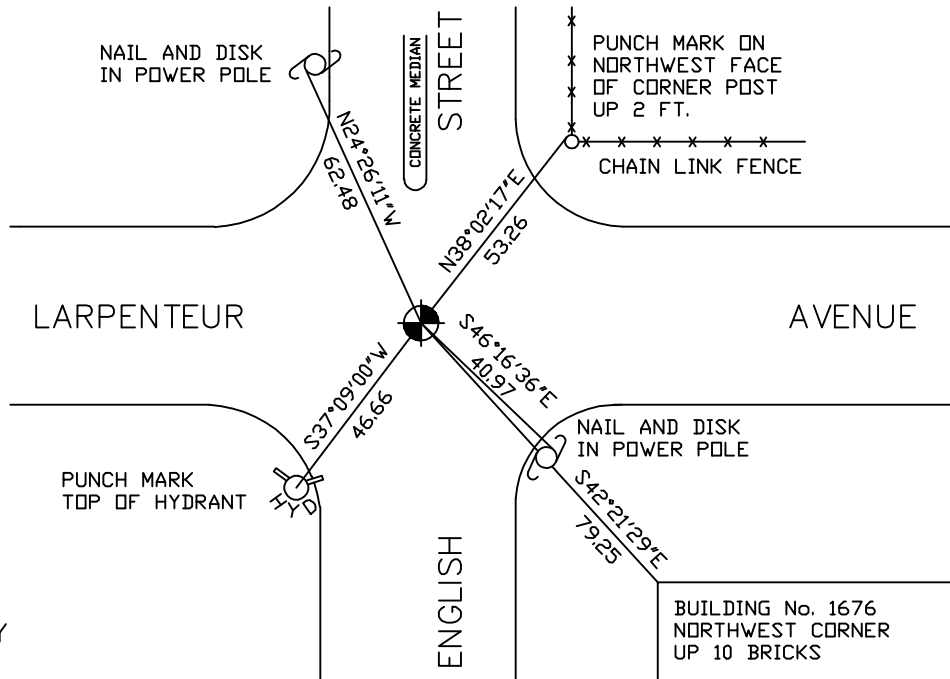
At the corner location shown on the sketch

On July 27, 2006 found a cast iron monument.

left monument as found lowered monument removed monument (explain)

On _____ placed a _____

SKETCH OF REFERENCE TIES



RAMSEY COUNTY
NAD83 (1986)

MONUMENT 457

X= 587355.823 (Easting)
Y= 173434.791 (Northing)

ALL DISTANCES ARE SHOWN IN U.S. SURVEY FEET.
BEARINGS ARE FOR TIE REFERENCE PURPOSES ONLY.

Statements of evidence relative to this corner are on the following page(s).

I hereby certify that this document and the data contained herein was prepared by me or under my direct supervision this _____ day of _____, 20____.

SIGNATURE

Minnesota License No. _____

County Surveyor Land Surveyor

OFFICE OF COUNTY SURVEYOR

County of Ramsey

I hereby certify that this document was filed in the County Surveyor's office on the ____ day of _____, 20____.

David D. Claypool, P.L.S., County Surveyor

By _____, Deputy

MONUMENT 457

Found cast iron monument, 1974.

Checked monument, August 12, 1977.

Checked and retied monument, July 17, 1984.

Removed 20 in cast iron monument for maintenance department, July 29, 1992.

Reset 20 in. cast iron monument flush, November 24, 1992.

Checked monument location; cemented around monument, October 19, 1993.

Retied monument, October 12, 2001.

Retied monument, July 27, 2006.