

MONUMENT 444

CERTIFICATE OF LOCATION OF GOVERNMENT CORNER

South Quarter Corner of Section 16, Township 29 North, Range 23 West,
County of Ramsey, State of Minnesota.

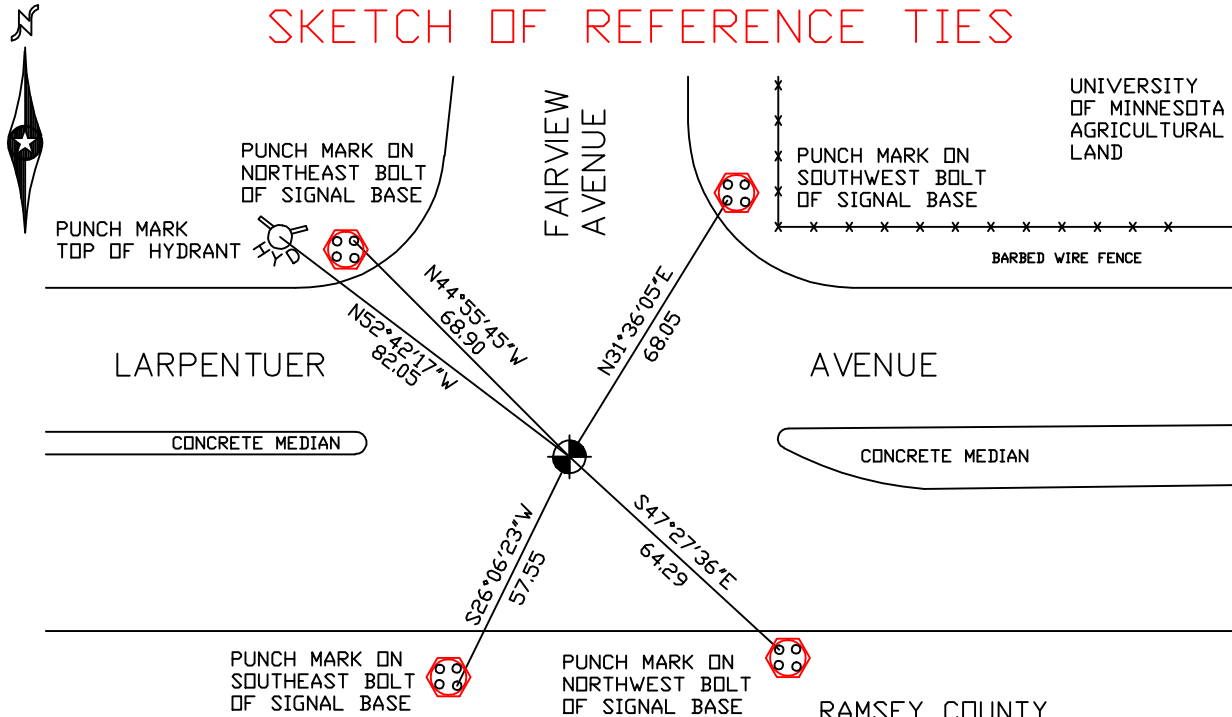
At the corner location shown on the sketch

On July 25, 2006 found a cast iron monument within a cast iron manhole assembly.

left monument as found lowered monument removed monument (explain)

On _____ placed a _____

SKETCH OF REFERENCE TIES



UNIVERSITY OF MINNESOTA AGRICULTURAL LAND

PUNCH MARK ON SOUTHWEST BOLT OF SIGNAL BASE
BARBED WIRE FENCE

RAMSEY COUNTY
NAD83 (1986)
MONUMENT 444
X= 553386.539 (Easting)
Y= 173214.510 (Northing)

ALL DISTANCES ARE SHOWN IN U.S. SURVEY FEET.
BEARINGS ARE FOR TIE REFERENCE PURPOSES ONLY.

Statements of evidence relative to this corner are on the following page(s).

I hereby certify that this document and the data contained herein was prepared by me or under my direct supervision this _____ day of _____, 20____.

SIGNATURE

Minnesota License No. _____

County Surveyor Land Surveyor

OFFICE OF COUNTY SURVEYOR

County of Ramsey

I hereby certify that this document was filed in the County Surveyor's office on the ____ day of _____, 20____.

David D. Claypool, P.L.S., County Surveyor

By _____, Deputy

MONUMENT 444

Found a granite monument, June 18, 1976.

Checked monument, August 12, 1977.

Monument destroyed by construction, April, 1998.

Set a 20 in. cast iron monument down +/- 18 in., July, 1998.

Contractor set a cast iron manhole assembly around monument, 1998.

Checked monument location and tied, August 19, 1998.

Retied monument, July 25, 2006.