

MONUMENT 442

CERTIFICATE OF LOCATION OF GOVERNMENT CORNER

South Quarter Corner of Section 17, Township 29 North, Range 23 West,
County of Ramsey, State of Minnesota.

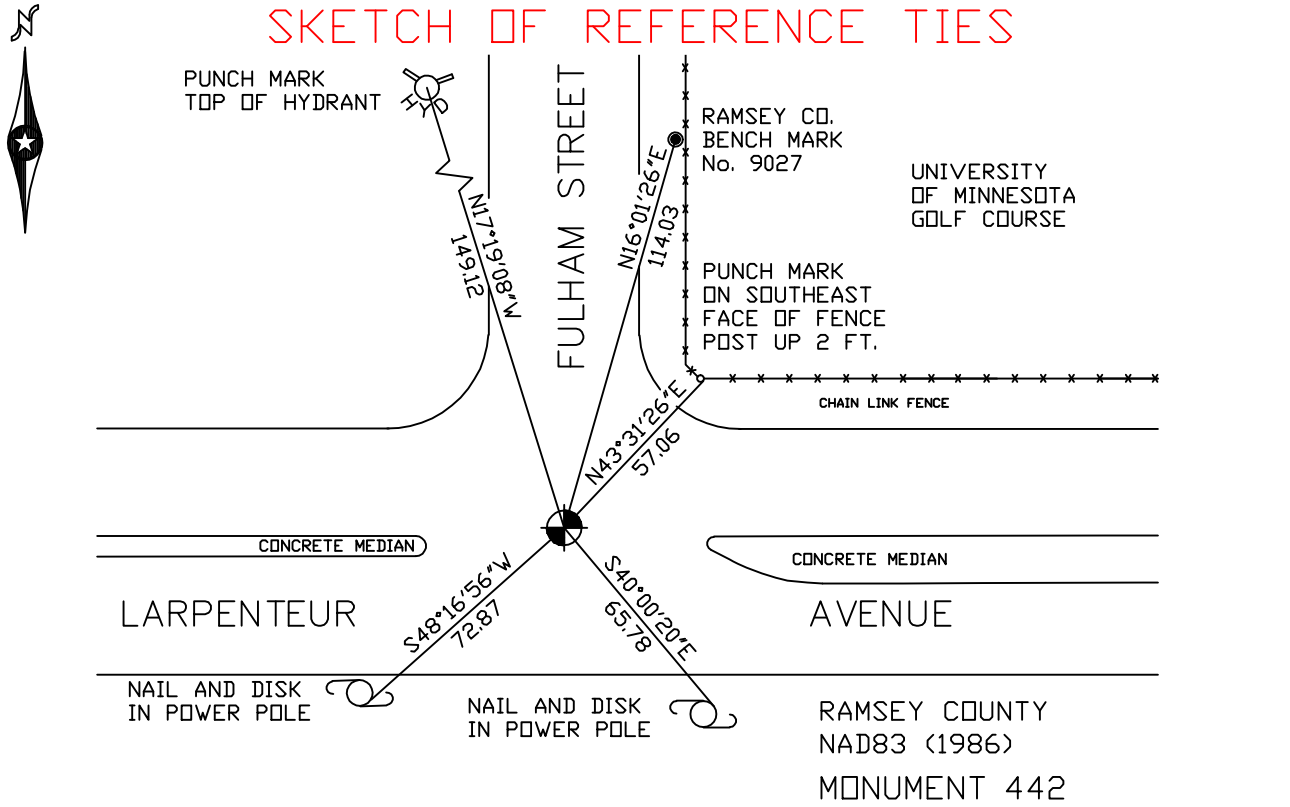
At the corner location shown on the sketch

On July 25, 2006 found a cast iron monument within a cast iron manhole assembly.

left monument as found lowered monument removed monument (explain)

On _____ placed a _____

SKETCH OF REFERENCE TIES



ALL DISTANCES ARE SHOWN IN U.S. SURVEY FEET.
BEARINGS ARE FOR TIE REFERENCE PURPOSES ONLY.

RAMSEY COUNTY
NAD83 (1986)
MONUMENT 442
X= 548119.557 (Easting)
Y= 173189.984 (Northing)

Statements of evidence relative to this corner are on the following page(s).

I hereby certify that this document and the data contained herein was prepared by me or under my direct supervision this _____ day of _____, 20____.

SIGNATURE

Minnesota License No. _____

County Surveyor Land Surveyor

OFFICE OF COUNTY SURVEYOR

County of Ramsey

I hereby certify that this document was filed in the County Surveyor's office on the ____ day of _____, 20____.

David D. Claypool, P.L.S., County Surveyor

By _____, Deputy

MONUMENT 442

Cast iron monument set by the City of St. Paul, no date given in field book.

Found a cast iron monument, 1976.

**Found cast iron monument broken, checked ties and set P.K. nails,
June 20, 1984.**

Set an 8 in. cast iron monument in concrete, June 21, 1984.

Construction Department removed monument, April, 1997.

**Set a 20 in. cast iron monument +/- 15 in. below new concrete pavement.
Contractor to set a 12 in. cast iron manhole assembly over monument, July 29,
1997.**

Retied monument, March 23, 2001.

Retied monument, July 25, 2006.