

MONUMENT 440

CERTIFICATE OF LOCATION OF GOVERNMENT CORNER

East Quarter Corner of Section 13, Township 29 North, Range 22 West, County of Ramsey, State of Minnesota.

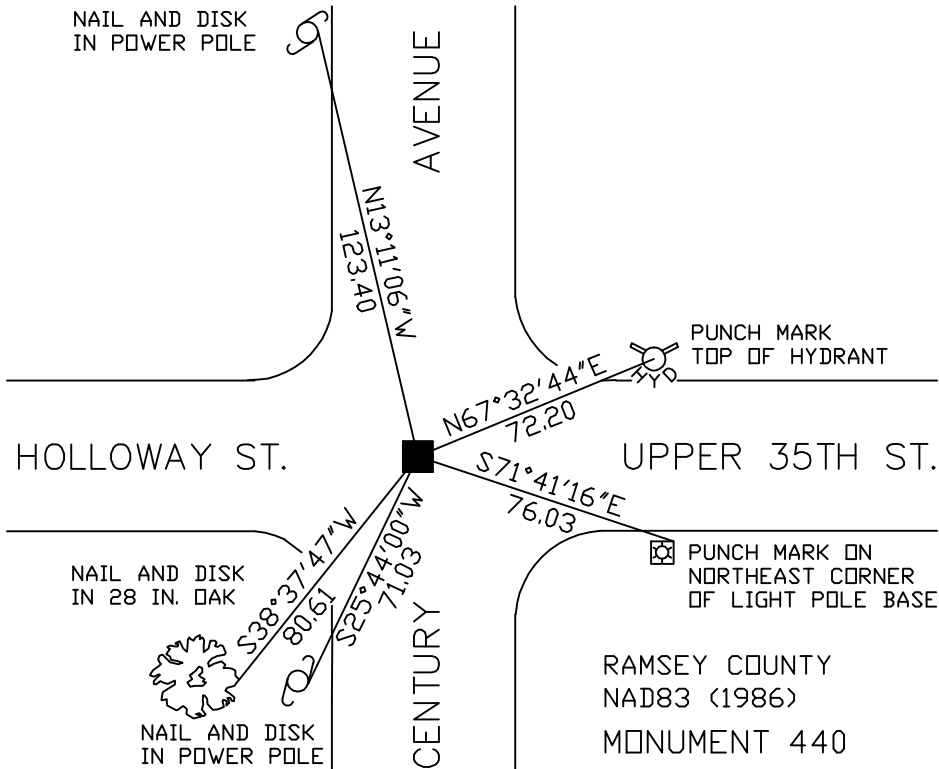
At the corner location shown on the sketch

On August 4, 2006 found a granite monument within a cast iron manhole assembly.

left monument as found lowered monument removed monument (explain)

On _____ placed a _____

SKETCH OF REFERENCE TIES



ALL DISTANCES ARE SHOWN IN U.S. SURVEY FEET.
BEARINGS ARE FOR TIE REFERENCE PURPOSES ONLY.

RAMSEY COUNTY
NAD83 (1986)
MONUMENT 440
X= 603126.605 (Easting)
Y= 176245.924 (Northing)

Statements of evidence relative to this corner are on the following page(s).

I hereby certify that this document and the data contained herein was prepared by me or under my direct supervision this _____ day of _____, 20____.

SIGNATURE

Minnesota License No. _____

County Surveyor Land Surveyor

OFFICE OF COUNTY SURVEYOR

County of Ramsey

I hereby certify that this document was filed in the County Surveyor's office on the ____ day of _____, 20____.

David D. Claypool, P.L.S., County Surveyor

By _____, Deputy

MONUMENT 440

**Found a 1/2 in. iron down 0.1 ft.; found a granite monument, down 0.66 ft.
Set a short cast iron monument, May 5, 1976.**

Tied monument, down +/- 0.3 ft., June 8, 1990.

Retied monument, October 18, 2000.

Removed short cast iron monument during road milling project, 2005.

Set a manhole assembly over granite monument, June, 2005.

Retied monument, August 4, 2006.