

# MONUMENT 438N

## CERTIFICATE OF LOCATION OF GOVERNMENT CORNER

Witness Monument to the East Quarter Corner of Section 14, Township 29 North, Range 22 West, County of Ramsey, State of Minnesota.

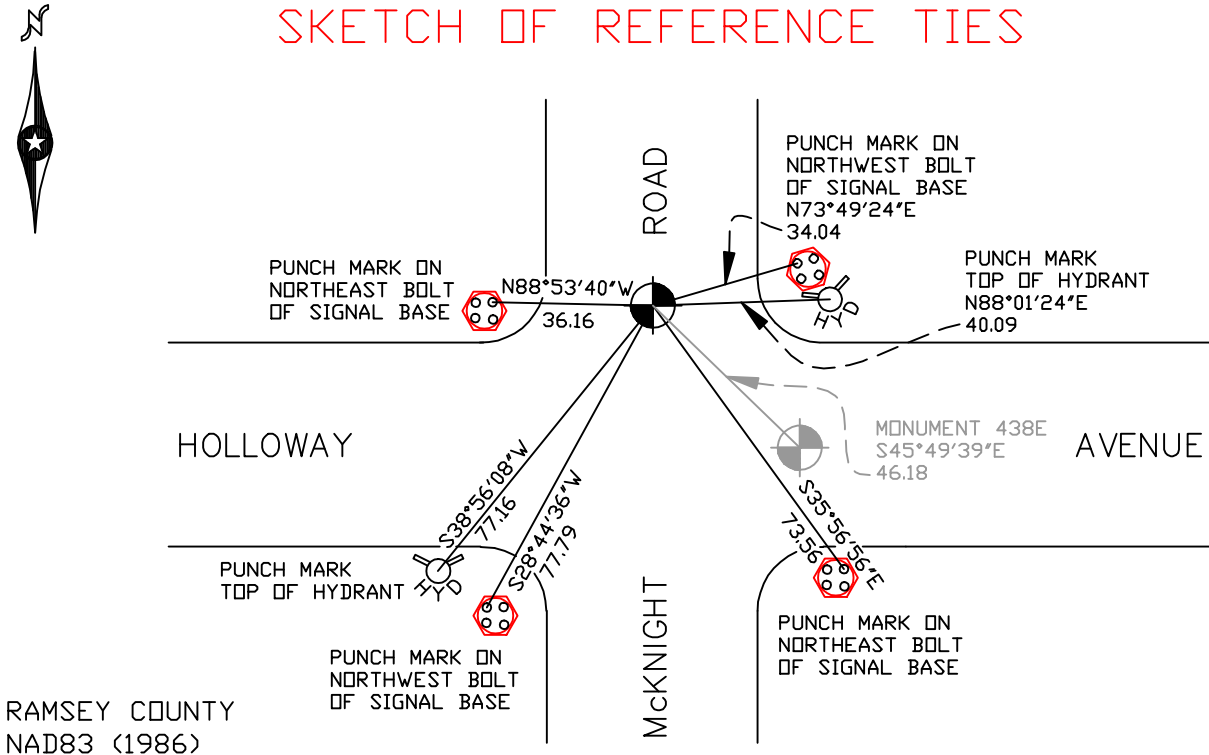
At the corner location shown on the sketch

On August 2, 2006 found a cast iron monument within a cast iron manhole assembly.

left monument as found     lowered monument     removed monument (explain)

On \_\_\_\_\_ placed a \_\_\_\_\_

### SKETCH OF REFERENCE TIES



RAMSEY COUNTY  
NAD83 (1986)

MONUMENT 438N

X= 597882.365 (Easting)  
Y= 176144.160 (Northing)

ALL DISTANCES ARE SHOWN IN U.S. SURVEY FEET.  
BEARINGS ARE FOR TIE REFERENCE PURPOSES ONLY.

Statements of evidence relative to this corner are on the following page(s).

I hereby certify that this document and the data contained herein was prepared by me or under my direct supervision this \_\_\_\_\_ day of \_\_\_\_\_, 20\_\_\_\_.

SIGNATURE

Minnesota License No. \_\_\_\_\_

County Surveyor     Land Surveyor

OFFICE OF COUNTY SURVEYOR

County of Ramsey

I hereby certify that this document was filed in the County Surveyor's office on the \_\_\_\_ day of \_\_\_\_\_, 20\_\_\_\_.

David D. Claypool, P.L.S., County Surveyor

By \_\_\_\_\_, Deputy

## MONUMENT 438N

**Found a manhole at center of street and broken off reference monument southwesterly; reference monuments northeasterly and southeasterly missing, September 16, 1974.**

**Found a cast iron witness corner monument 33 ft. north of true position of the quarter corner. Witness corner monument is on line, November 15, 1974.**

**Retied monument, July 12, 1984.**

**Monument destroyed during McKnight Road reconstruction, 1988.**

**Set a 20 in. cast iron monument in north witness corner monument position, 1993.**

**Retied monument, April 2, 2001.**

**Lowered north witness corner monument 12 in. below grade for road milling project; set tube, July 22, 2003.**

**Set a cast iron manhole assembly over north witness monument, August 19, 2003.**

**Retied monument, August 2, 2006.**