

MONUMENT 438E

CERTIFICATE OF LOCATION OF GOVERNMENT CORNER

Witness Monument to the East Quarter Corner of Section 14, Township 29 North, Range 22 West, County of Ramsey, State of Minnesota.

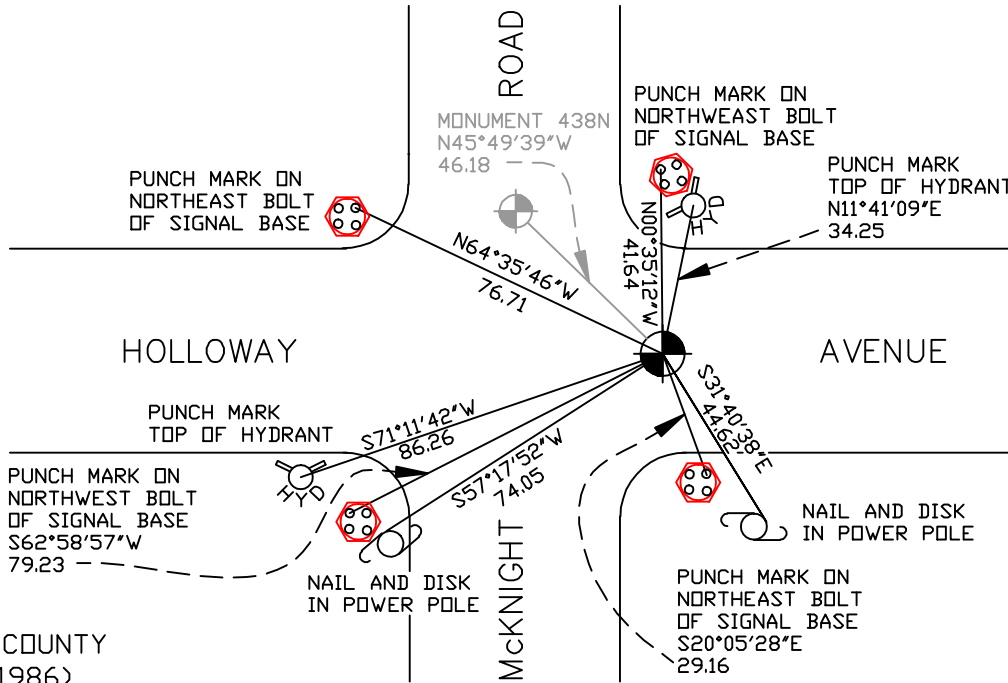
At the corner location shown on the sketch

On August 2, 2006 found cast iron monument within a cast iron manhole assembly.

left monument as found lowered monument removed monument (explain)

On _____ placed a _____

SKETCH OF REFERENCE TIES



RAMSEY COUNTY
NAD83 (1986)

MONUMENT 438E

X= 597915.558 (Easting)
Y= 176112.009 (Northing)

ALL DISTANCES ARE SHOWN IN U.S. SURVEY FEET.
BEARINGS ARE FOR TIE REFERENCE PURPOSES ONLY.

Statements of evidence relative to this corner are on the following page(s).

I hereby certify that this document and the data contained herein was prepared by me or under my direct supervision this _____ day of _____, 20____.

SIGNATURE

Minnesota License No. _____

County Surveyor Land Surveyor

OFFICE OF COUNTY SURVEYOR

County of Ramsey

I hereby certify that this document was filed in the County Surveyor's office on the ____ day of _____, 20____.

David D. Claypool, P.L.S., County Surveyor

By _____, Deputy

MONUMENT 438E

Found a manhole at center of street and broken off reference monument southwesterly; reference monuments northeasterly and southeasterly missing, September 16, 1974.

Placed a cast iron witness corner monument 33 ft. east of true position of the quarter corner. Witness corner monument is on line, November 15, 1974.

Replaced east witness monument after construction, no date in field book.

Retied monument, July 12, 1984.

Monuments destroyed during McKnight Road reconstruction, 1988.

Placed P.K. nail for east witness monument, 1989.

Tied out P.K. nail, August 3, 1990.

Set a 20 in. cast iron monument in east witness position, August 16, 1990.

Retied monument, April 2, 2001.

Set a cast iron manhole assembly over east witness monument, August 20, 2004.

Retied monument, August 2, 2006.