

MONUMENT 435

CERTIFICATE OF LOCATION OF GOVERNMENT CORNER

Center of Section 15, Township 29 North, Range 22 West, County of Ramsey,
State of Minnesota.

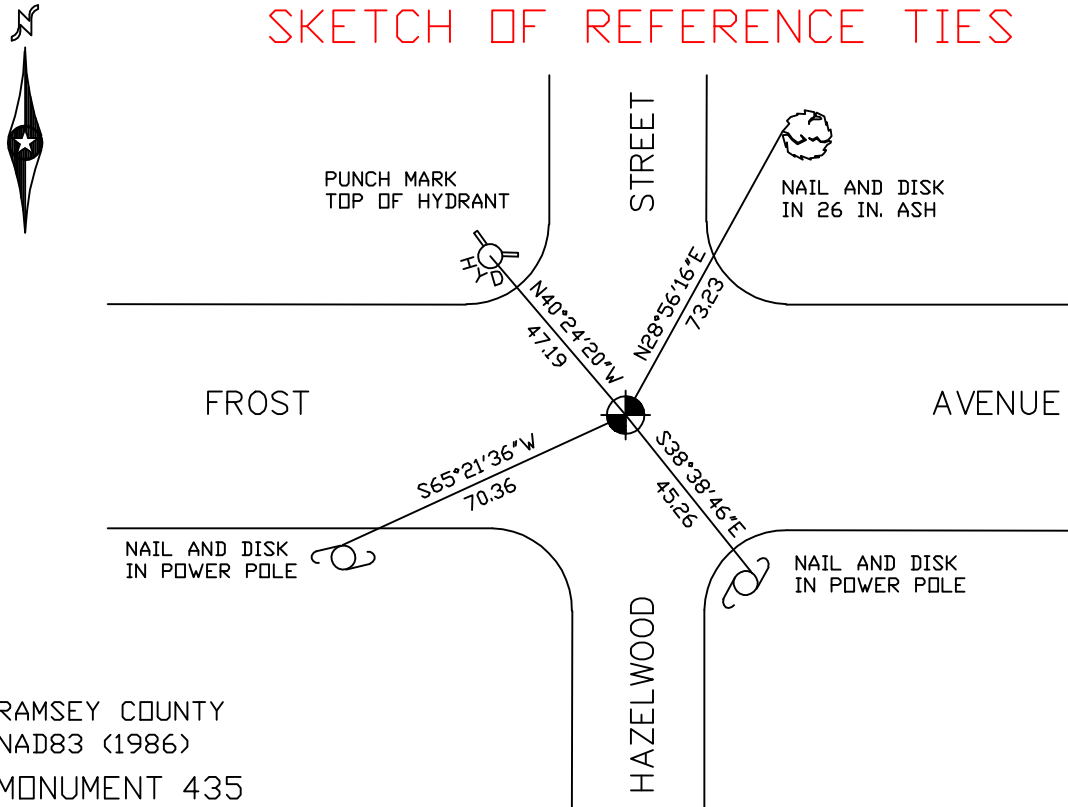
At the corner location shown on the sketch

On August 2, 2006 found cast iron monument.

left monument as found lowered monument removed monument (explain)

On _____ placed a _____

SKETCH OF REFERENCE TIES



RAMSEY COUNTY
NAD83 (1986)
MONUMENT 435

X= 589992.423 (Easting)
Y= 176065.136 (Northing)

ALL DISTANCES ARE SHOWN IN U.S. SURVEY FEET.
BEARINGS ARE FOR TIE REFERENCE PURPOSES ONLY.

Statements of evidence relative to this corner are on the following page(s).

I hereby certify that this document and the data contained herein was prepared by me or under my direct supervision this _____ day of _____, 20____.

SIGNATURE

Minnesota License No. _____

County Surveyor Land Surveyor

OFFICE OF COUNTY SURVEYOR

County of Ramsey

I hereby certify that this document was filed in the County Surveyor's office on the ____ day of _____, 20____.

David D. Claypool, P.L.S., County Surveyor

By _____, Deputy

MONUMENT 435

Found railroad spike flush. Dug 2 ft. and found nothing. Placed cast iron monument and retied, September 6, 1974.

Found all 3 reference monuments; southeasterly and southwesterly monuments broken off, September 16, 1974.

Construction destroyed monument and reference monuments; placed P.K. nail and retied, November 21, 1983.

Set 20 in. cast iron monument, 1984.

Retied monument, October 19, 2000.

Retied monument, August 2, 2006.