

MONUMENT 421

CERTIFICATE OF LOCATION OF GOVERNMENT CORNER

Center of Section 16, Township 29 North, Range 23 West, County of Ramsey,
State of Minnesota.

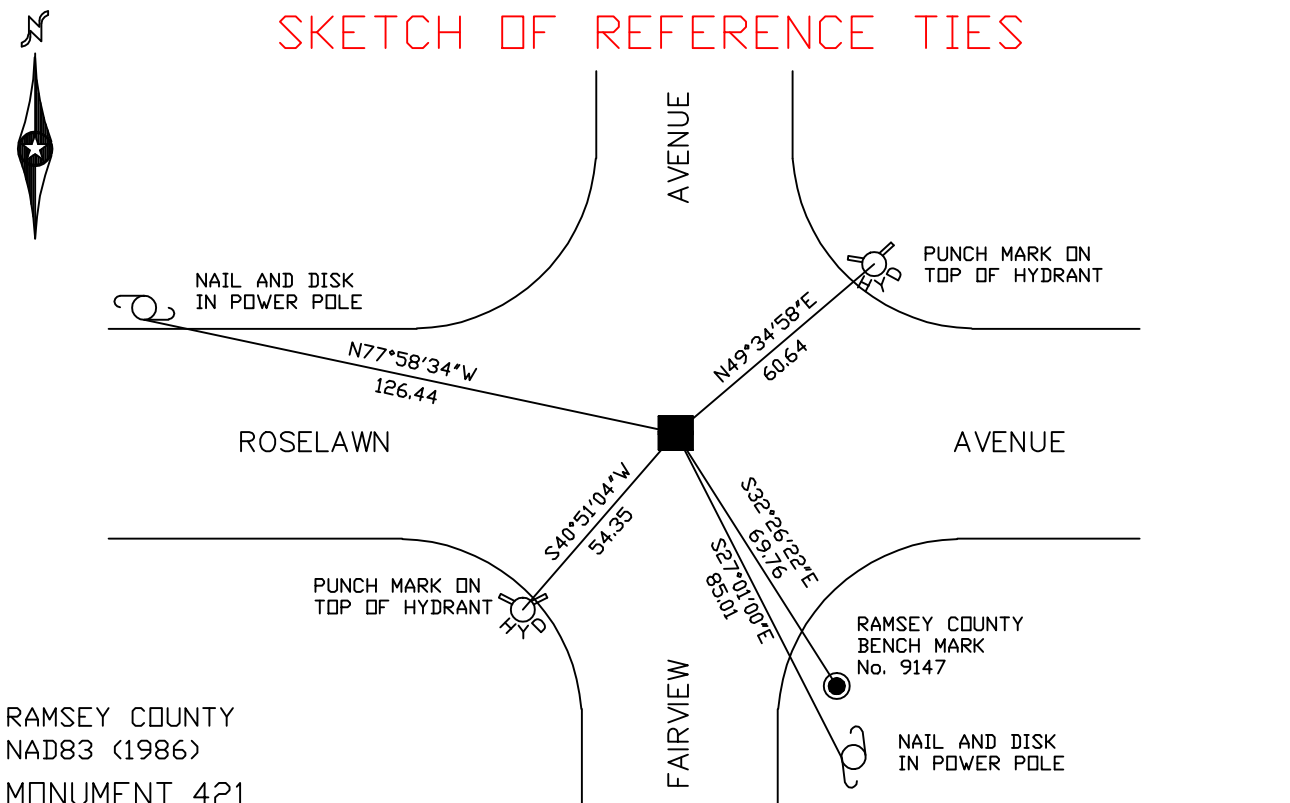
At the corner location shown on the sketch

On August 24, 2006 found a granite monument.

left monument as found lowered monument removed monument (explain)

On _____ placed a _____

SKETCH OF REFERENCE TIES



RAMSEY COUNTY
NAD83 (1986)
MONUMENT 421

X= 553385.156 (Easting)
Y= 175847.970 (Northing)

ALL DISTANCES ARE SHOWN IN U.S. SURVEY FEET.
BEARINGS ARE FOR TIE REFERENCE PURPOSES ONLY.

Statements of evidence relative to this corner are on the following page(s).

I hereby certify that this document and the data contained herein was prepared by me or under my direct supervision this _____ day of _____, 20____.

SIGNATURE

Minnesota License No. _____

County Surveyor Land Surveyor

OFFICE OF COUNTY SURVEYOR

County of Ramsey

I hereby certify that this document was filed in the County Surveyor's office on the ____ day of _____, 20____.

David D. Claypool, P.L.S., County Surveyor

By _____, Deputy

MONUMENT 421

Found granite monument down 0.4 ft. and retied, July 31, 1974.

Placed cast iron cap monument, November 13, 1974.

Checked monument, July 29, 1977.

Retied monument, down 0.15 ft., March 4, 1993.

Retied monument, down 0.2 ft., December 7, 2000.

Removed cast iron cap; granite monument down 5 in., June 26, 2003.

Retied monument, August 24, 2006.