

MONUMENT 417

CERTIFICATE OF LOCATION OF GOVERNMENT CORNER

Northeast Corner of Section 13, Township 29 North, Range 22 West, County of Ramsey, State of Minnesota.

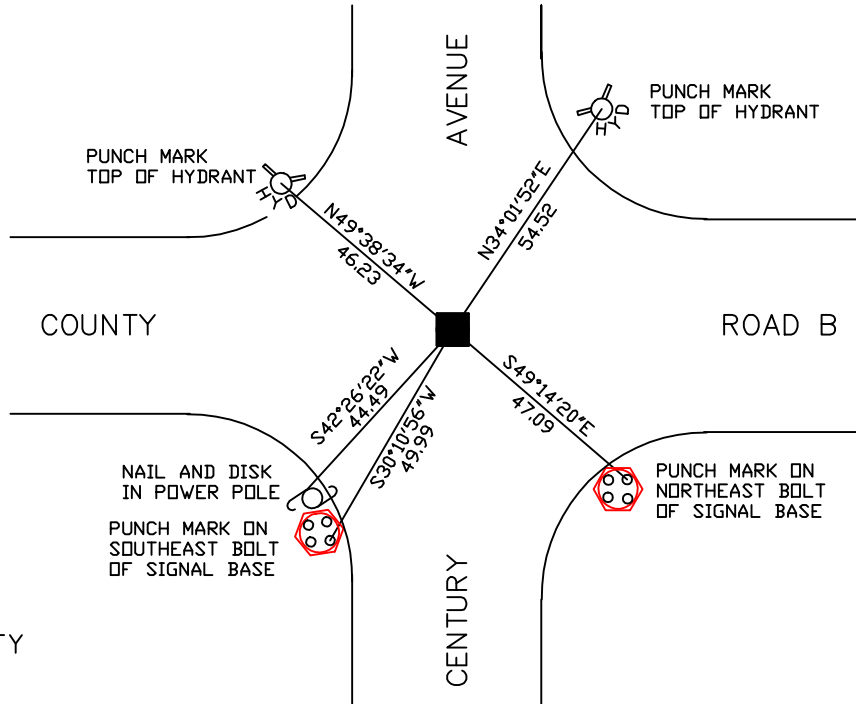
At the corner location shown on the sketch

On August 31, 2006 found a granite monument within a cast iron manhole assembly.

left monument as found lowered monument removed monument (explain)

On _____ placed a _____

SKETCH OF REFERENCE TIES



RAMSEY COUNTY
NAD83 (1986)
MONUMENT 417

X= 603100.664 (Easting)
Y= 178873.112 (Northing)

ALL DISTANCES ARE SHOWN IN U.S. SURVEY FEET.
BEARINGS ARE FOR TIE REFERENCE PURPOSES ONLY.

Statements of evidence relative to this corner are on the following page(s).

I hereby certify that this document and the data contained herein was prepared by me or under my direct supervision this _____ day of _____, 20____.

SIGNATURE

Minnesota License No. _____

County Surveyor Land Surveyor

OFFICE OF COUNTY SURVEYOR

County of Ramsey

I hereby certify that this document was filed in the County Surveyor's office on the ____ day of _____, 20____.

David D. Claypool, P.L.S., County Surveyor

By _____, Deputy

MONUMENT 417

Found ½ in. iron pipe. Found granite monument, down 0.92 ft., May 5, 1976.

Set a 10 in. cast iron monument over granite monument, August 6, 1976.

Checked and retied monument, July 5, 1984.

Retied monument, October 19, 2000.

Removed 10 in cast iron monument. Placed a cast iron manhole assembly over granite monument, June 22, 2005.

Retied monument, August 31, 2006.