

MONUMENT 411

CERTIFICATE OF LOCATION OF GOVERNMENT CORNER

Southeast Corner of Section 9, Township 29 North, Range 22 West, County of Ramsey, State of Minnesota.

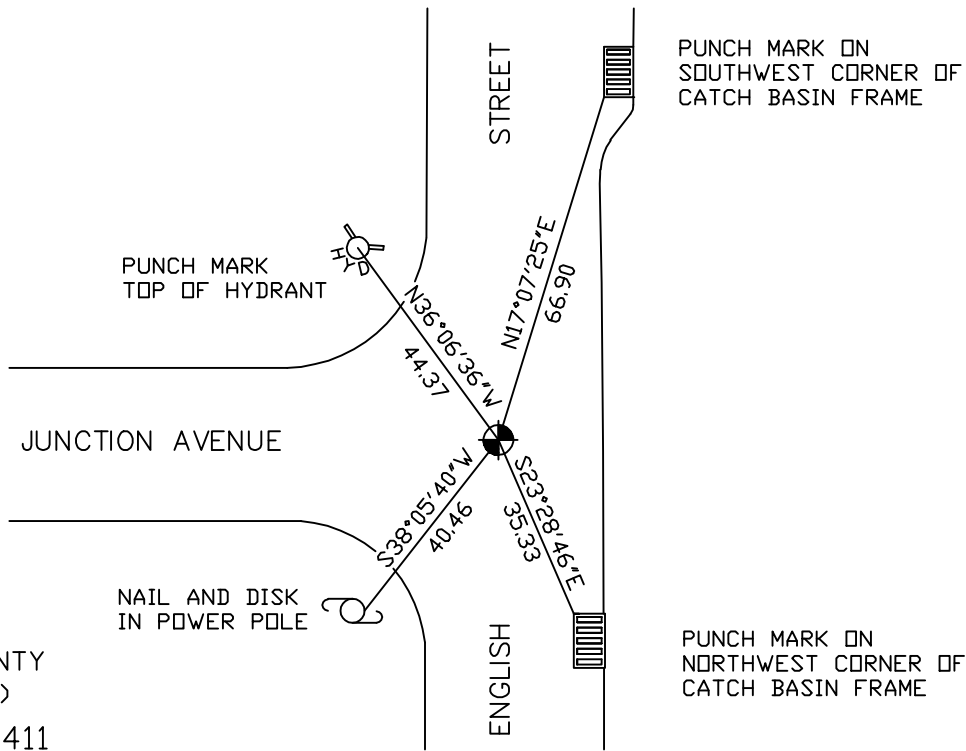
At the corner location shown on the sketch

On August 30, 2006 found a cast iron monument within a cast iron manhole assembly.

left monument as found lowered monument removed monument (explain)

On _____ placed a _____

SKETCH OF REFERENCE TIES



RAMSEY COUNTY
NAD83 (1986)
MONUMENT 411

X= 587326.982 (Easting)
Y= 178712.990 (Northing)

ALL DISTANCES ARE SHOWN IN U.S. SURVEY FEET.
BEARINGS ARE FOR TIE REFERENCE PURPOSES ONLY.

Statements of evidence relative to this corner are on the following page(s).

I hereby certify that this document and the data contained herein was prepared by me or under my direct supervision this _____ day of _____, 20____.

SIGNATURE

Minnesota License No. _____

County Surveyor Land Surveyor

OFFICE OF COUNTY SURVEYOR

County of Ramsey

I hereby certify that this document was filed in the County Surveyor's office on the ____ day of _____, 20____.

David D. Claypool, P.L.S., County Surveyor

By _____, Deputy

MONUMENT 411

Found cast iron monument flush and retied, February 20, 1976.

Retied monument, October 19, 2000.

Tied and removed cast iron monument for City of Maplewood construction, May 22, 2002.

Found $\frac{3}{4}$ in. pipe down 2.2 ft. while digging to reset cast iron monument. Iron pipe matches monument position; set 20 in. cast iron monument within a cast iron manhole assembly, October 20, 2002.

Retied monument, August 30, 2006.