

# MONUMENT 402

## CERTIFICATE OF LOCATION OF GOVERNMENT CORNER

South Quarter Corner of Section 11, Township 29 North, Range 23 West, County of Ramsey, State of Minnesota.

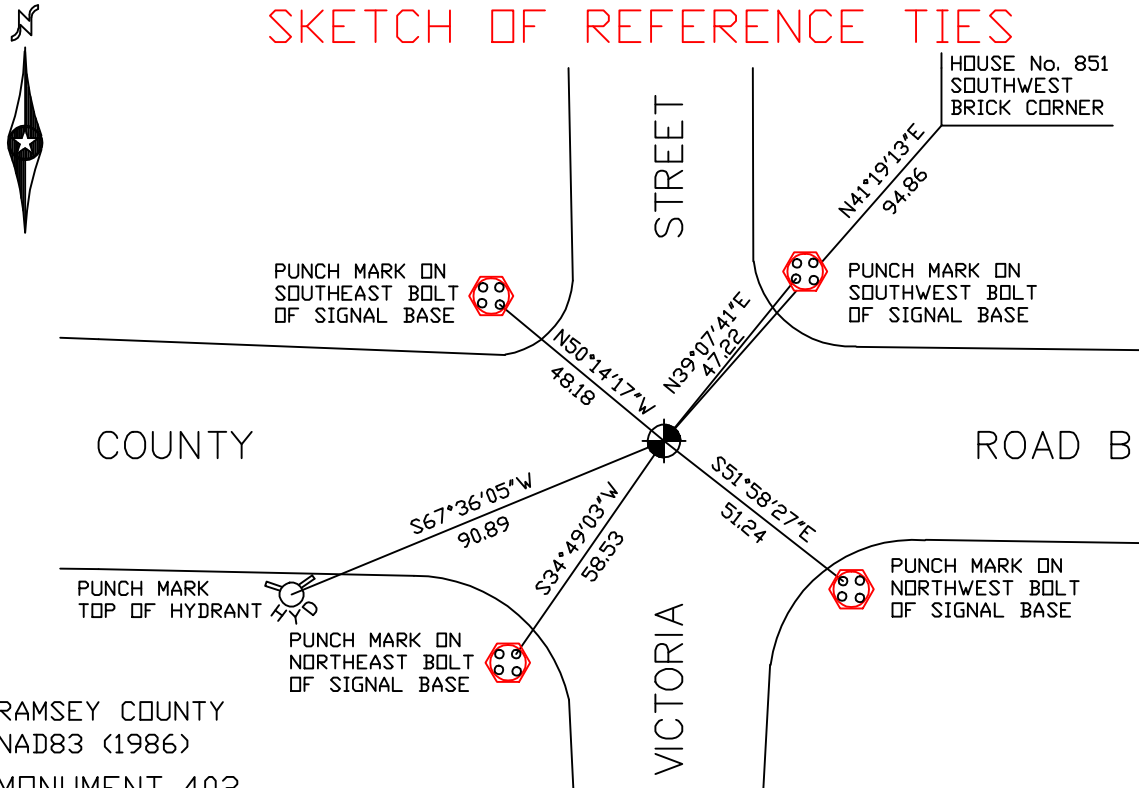
At the corner location shown on the sketch

On July 11, 2006 found a cast iron monument within a cast iron manhole assembly.

left monument as found     lowered monument     removed monument (explain)

On \_\_\_\_\_ placed a \_\_\_\_\_

### SKETCH OF REFERENCE TIES



RAMSEY COUNTY  
NAD83 (1986)

MONUMENT 402

X= 563903.792 (Easting)  
Y= 178550.742 (Northing)

ALL DISTANCES ARE SHOWN IN U.S. SURVEY FEET.  
BEARINGS ARE FOR TIE REFERENCE PURPOSES ONLY.

Statements of evidence relative to this corner are on the following page(s).

I hereby certify that this document and the data contained herein was prepared by me or under my direct supervision this \_\_\_\_\_ day of \_\_\_\_\_, 20\_\_\_\_.

SIGNATURE

Minnesota License No. \_\_\_\_\_

County Surveyor     Land Surveyor

OFFICE OF COUNTY SURVEYOR

County of Ramsey

I hereby certify that this document was filed in the County Surveyor's office on the \_\_\_\_ day of \_\_\_\_\_, 20\_\_\_\_.

David D. Claypool, P.L.S., County Surveyor

By \_\_\_\_\_, Deputy

## MONUMENT 402

**Found a cast iron monument flush and retied, July 23, 1974.**

**Checked monument, July 29, 1977.**

**Retied monument, August 10, 1999.**

**Removed old 20 in. cast iron monument; found a 2 in. iron, 1.8 ft. long, down 1.8 ft.; set a 20 in. cast iron monument down 18 in. and back filled, July 9, 2001.**

**Retied monument, July 11, 2006.**