

# MONUMENT 401

## CERTIFICATE OF LOCATION OF GOVERNMENT CORNER

Northeast Corner of Section 15, Township 29 North, Range 23 West, County of Ramsey, State of Minnesota.

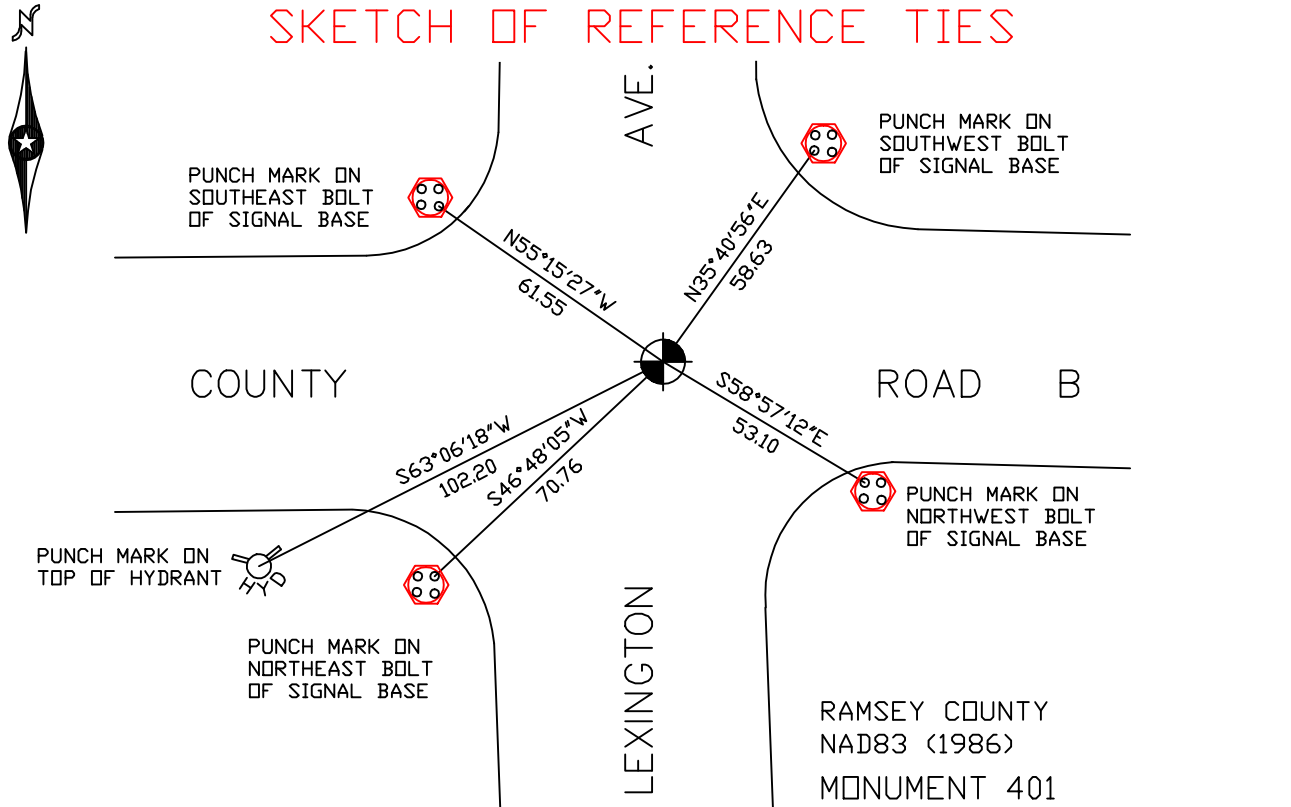
At the corner location shown on the sketch

On July 11, 2006 found a cast iron monument within a cast iron manhole assembly.

left monument as found     lowered monument     removed monument (explain)

On \_\_\_\_\_ placed a \_\_\_\_\_

### SKETCH OF REFERENCE TIES



ALL DISTANCES ARE SHOWN IN U.S. SURVEY FEET.  
BEARINGS ARE FOR TIE REFERENCE PURPOSES ONLY.

RAMSEY COUNTY  
NAD83 (1986)  
MONUMENT 401  
X= 561282.781 (Easting)  
Y= 178594.622 (Northing)

Statements of evidence relative to this corner are on the following page(s).

I hereby certify that this document and the data contained herein was prepared by me or under my direct supervision this \_\_\_\_\_ day of \_\_\_\_\_, 20\_\_\_\_.

SIGNATURE

Minnesota License No. \_\_\_\_\_

County Surveyor     Land Surveyor

OFFICE OF COUNTY SURVEYOR

County of Ramsey

I hereby certify that this document was filed in the County Surveyor's office on the \_\_\_\_ day of \_\_\_\_\_, 20\_\_\_\_.

David D. Claypool, P.L.S., County Surveyor

By \_\_\_\_\_, Deputy

## MONUMENT 401

**Found a P.K. nail, checked location (see Survey Book No. 1, pages 21 and 23).  
Set a cast iron monument. No date given in survey field book.**

**Tied monument, July 28, 1975.**

**Checked monument, July 29, 1977.**

**Monument destroyed during road construction; reset monument, April, 1981.**

**Tied out monument and set a 20 in. cast iron monument, 1.5 ft. below grade,  
April 15 and 29, 1998.**

**Set a cast iron manhole assembly over monument, July 24, 1998.**

**Retied monument, August 10, 1999.**

**Retied monument, July 11, 2006.**