

# MONUMENT 398

## CERTIFICATE OF LOCATION OF GOVERNMENT CORNER

South Quarter Corner of Section 9, Township 29 North, Range 23 West, County of Ramsey, State of Minnesota.

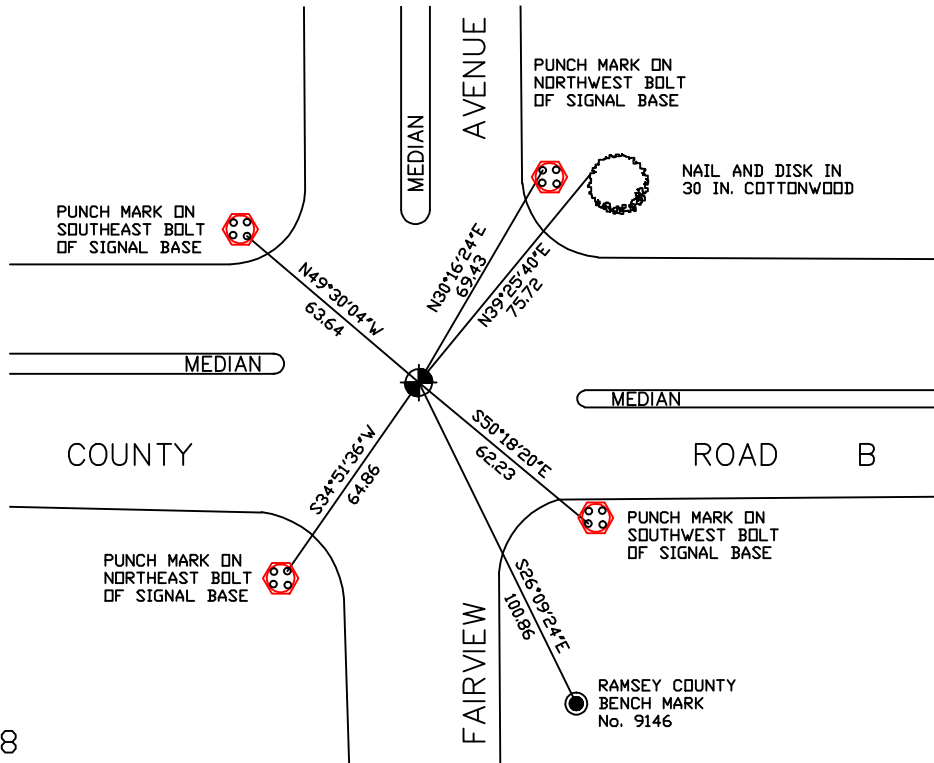
At the corner location shown on the sketch

On August 24, 2006 found a cast iron monument within a cast iron manhole assembly.

left monument as found     lowered monument     removed monument (explain)

On \_\_\_\_\_ placed a \_\_\_\_\_

### SKETCH OF REFERENCE TIES



RAMSEY COUNTY  
NAD83 (1986)  
MONUMENT 398

X= 553383.328 (Easting)  
Y= 178469.548 (Northing)

ALL DISTANCES ARE SHOWN IN U.S. SURVEY FEET.  
BEARINGS ARE FOR TIE REFERENCE PURPOSES ONLY.

Statements of evidence relative to this corner are on the following page(s).

I hereby certify that this document and the data contained herein was prepared by me or under my direct supervision this \_\_\_\_\_ day of \_\_\_\_\_, 20\_\_\_\_.

SIGNATURE

Minnesota License No. \_\_\_\_\_

County Surveyor     Land Surveyor

OFFICE OF COUNTY SURVEYOR

County of Ramsey

I hereby certify that this document was filed in the County Surveyor's office on the \_\_\_\_ day of \_\_\_\_\_, 20\_\_\_\_.

David D. Claypool, P.L.S., County Surveyor

By \_\_\_\_\_, Deputy

## MONUMENT 398

**Found a cast iron monument flush and tied out, January 28, 1975.**

**Checked monument, July 29, 1977.**

**Retied monument, August 13, 1990.**

**Retied monument, December 7, 2000.**

**Monument lowered for milling and overlay, June 30, 2004.**

**Set a cast iron manhole assembly over cast iron monument, July, 2004.**

**Tied monument, July 15, 2004.**

**Retied monument, August 24, 2006.**