

# MONUMENT 394

## CERTIFICATE OF LOCATION OF GOVERNMENT CORNER

East Quarter Corner of Section 12, Township 29 North, Range 22 West, County of Ramsey, State of Minnesota.

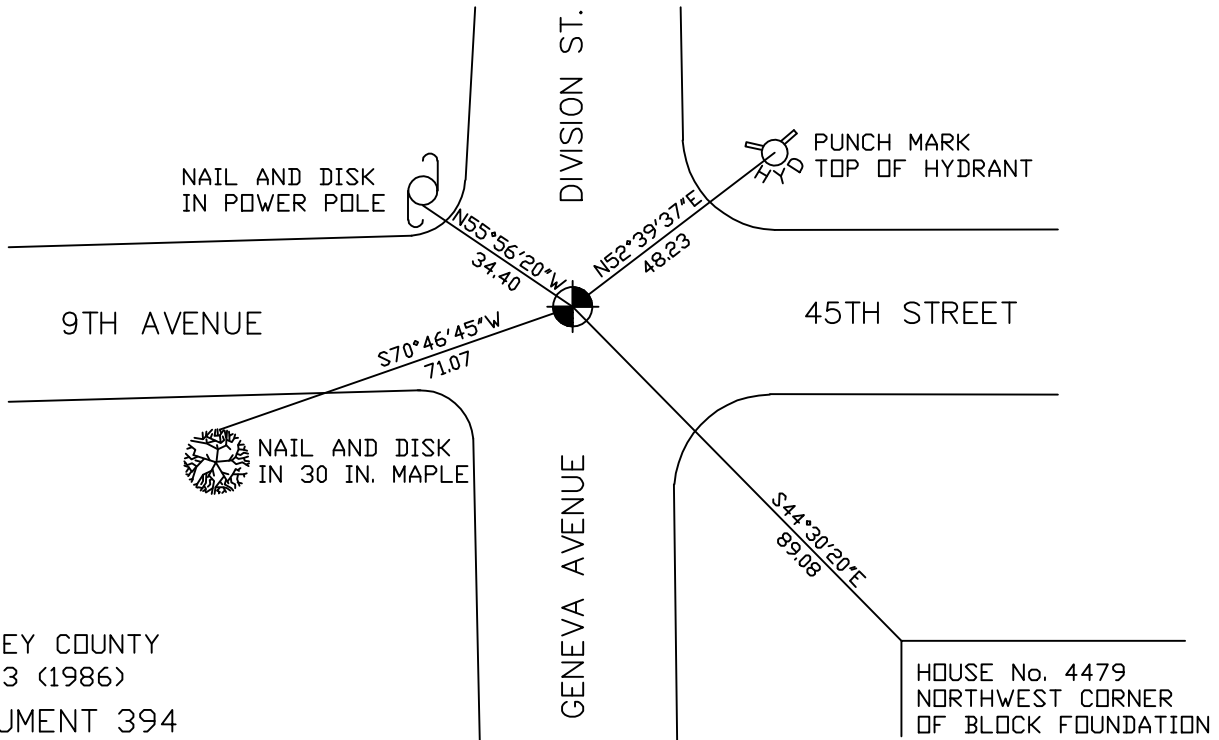
At the corner location shown on the sketch

On June 23, 2006 found a cast iron monument, flush.

left monument as found     lowered monument     removed monument (explain)

On \_\_\_\_\_ placed a \_\_\_\_\_

### SKETCH OF REFERENCE TIES



RAMSEY COUNTY  
NAD83 (1986)  
MONUMENT 394

X= 603079.515 (Easting)  
Y= 181517.060 (Northing)

ALL DISTANCES ARE SHOWN IN U.S. SURVEY FEET.  
BEARINGS ARE FOR TIE REFERENCE PURPOSES ONLY.

Statements of evidence relative to this corner are on the following page(s).

I hereby certify that this document and the data contained herein was prepared by me or under my direct supervision this \_\_\_\_\_ day of \_\_\_\_\_, 20\_\_\_\_.

SIGNATURE

Minnesota License No. \_\_\_\_\_

County Surveyor     Land Surveyor

OFFICE OF COUNTY SURVEYOR

County of Ramsey

I hereby certify that this document was filed in the County Surveyor's office on the \_\_\_\_ day of \_\_\_\_\_, 20\_\_\_\_.

David D. Claypool, P.L.S., County Surveyor

By \_\_\_\_\_, Deputy

## MONUMENT 394

**Found a 3/4 in. solid iron 2 ft. long, down 1 1/2 in.; dug down 7 in. and found a 2 in. solid 4.4 ft. long pointed iron. Dug to 4.7 ft. and found nothing more. Set a 20 in. cast iron monument to mark 2 in. solid iron position, February 25, 1976.**

**Retied monument, July 5, 1984.**

**Retied monument, August 9, 1990.**

**Retied monument, October 18, 2000.**

**Monument raised up to grade and concrete collar placed around monument, June 22, 2005.**

**Retied monument, June 23, 2006.**