

# MONUMENT 389N

## CERTIFICATE OF LOCATION OF GOVERNMENT CORNER

A Witness Monument to the Center of Section 10, Township 29 North, Range 22 West, County of Ramsey, State of Minnesota.

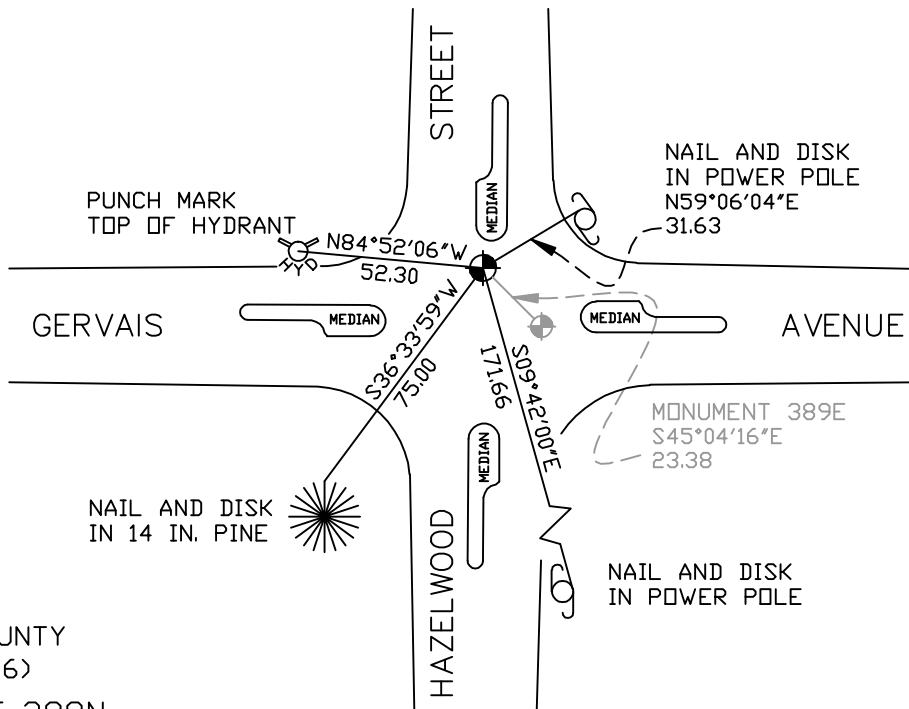
At the corner location shown on the sketch

On August 8, 2006 found a cast iron monument within a cast iron manhole assembly.

left monument as found     lowered monument     removed monument (explain)

On \_\_\_\_\_ placed a \_\_\_\_\_

## SKETCH OF REFERENCE TIES



RAMSEY COUNTY  
NAD83 (1986)

MONUMENT 389N

X= 589969.871 (Easting)  
Y= 181351.178 (Northing)

ALL DISTANCES ARE SHOWN IN U.S. SURVEY FEET.  
BEARINGS ARE FOR TIE REFERENCE PURPOSES ONLY.

Statements of evidence relative to this corner are on the following page(s).

I hereby certify that this document and the data contained herein was prepared by me or under my direct supervision this \_\_\_\_\_ day of \_\_\_\_\_, 20\_\_\_\_.

SIGNATURE

Minnesota License No. \_\_\_\_\_

County Surveyor     Land Surveyor

OFFICE OF COUNTY SURVEYOR

County of Ramsey

I hereby certify that this document was filed in the County Surveyor's office on the \_\_\_\_ day of \_\_\_\_\_, 20\_\_\_\_.

David D. Claypool, P.L.S., County Surveyor

By \_\_\_\_\_, Deputy

## MONUMENT 389N

**Found a manhole at monument location. Put a punch mark in top of manhole by using old ties from the City of Maplewood and County Highway Department. Set witness monument 33 ft. north on the quarter section line. No date given in field book.**

**Retied monument, April 10, 1975.**

**Checked monument, August 9, 1990.**

**Monument destroyed by City of Maplewood; set a 20 in. cast iron monument, October 13, 1992.**

**Removed cast iron monument for City of Maplewood, June 13, 1997.**

**Set 20 in. cast iron monument within cast iron manhole assembly at 16.5 ft. north of corner location, May 13, 1998.**

**Tied monument, April 2, 2001.**

**Retied monument, August 8, 2006.**