

# MONUMENT 386

## CERTIFICATE OF LOCATION OF GOVERNMENT CORNER

West Quarter Corner of Section 9, Township 29 North, Range 22 West, County of Ramsey, State of Minnesota.

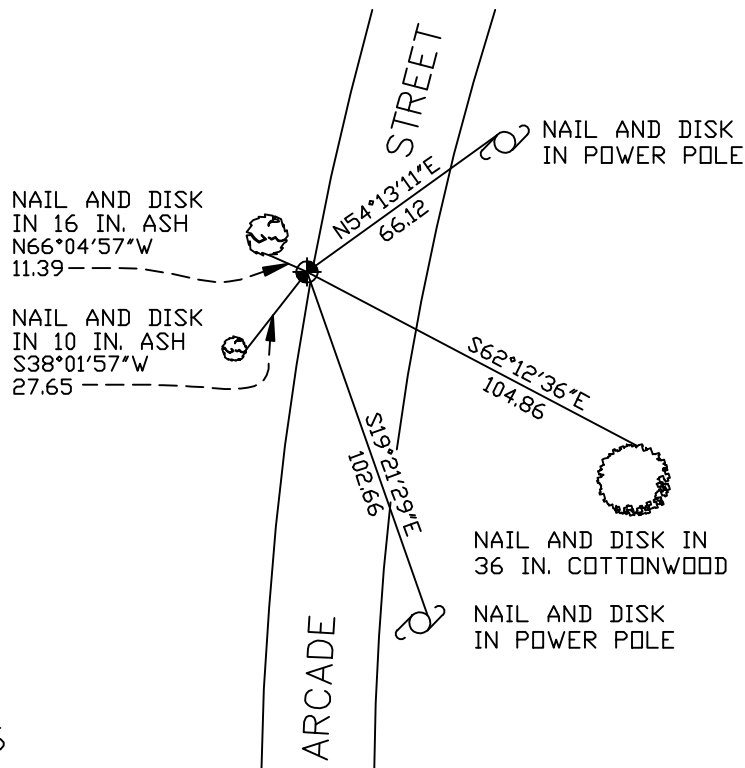
At the corner location shown on the sketch

On August 8, 2006 found a cast iron monument, down 0.5 ft.

left monument as found     lowered monument     removed monument (explain)

On \_\_\_\_\_ placed a \_\_\_\_\_

### SKETCH OF REFERENCE TIES



RAMSEY COUNTY  
NAD83 (1986)  
MONUMENT 386

X= 582030.672 (Easting)  
Y= 181287.048 (Northing)

ALL DISTANCES ARE SHOWN IN U.S. SURVEY FEET.  
BEARINGS ARE FOR TIE REFERENCE PURPOSES ONLY.

Statements of evidence relative to this corner are on the following page(s).

I hereby certify that this document and the data contained herein was prepared by me or under my direct supervision this \_\_\_\_\_ day of \_\_\_\_\_, 20\_\_\_\_.

SIGNATURE

Minnesota License No. \_\_\_\_\_

County Surveyor     Land Surveyor

OFFICE OF COUNTY SURVEYOR

County of Ramsey

I hereby certify that this document was filed in the County Surveyor's office on the \_\_\_\_ day of \_\_\_\_\_, 20\_\_\_\_.

David D. Claypool, P.L.S., County Surveyor

By \_\_\_\_\_, Deputy

## MONUMENT 386

**Found a cast iron monument, 1974.**

**Retied monument, June 22, 1987.**

**Checked monument, August 10, 1990.**

**Retied monument, down +/- 0.5 ft., April 27, 1995.**

**Set sign and post 6 ft. westerly of monument, July 29, 1998.**

**Retied monument, August 8, 2006.**