

# MONUMENT 385

## CERTIFICATE OF LOCATION OF GOVERNMENT CORNER

Center of Section 8, Township 29 North, Range 22 West, County of Ramsey,  
State of Minnesota.

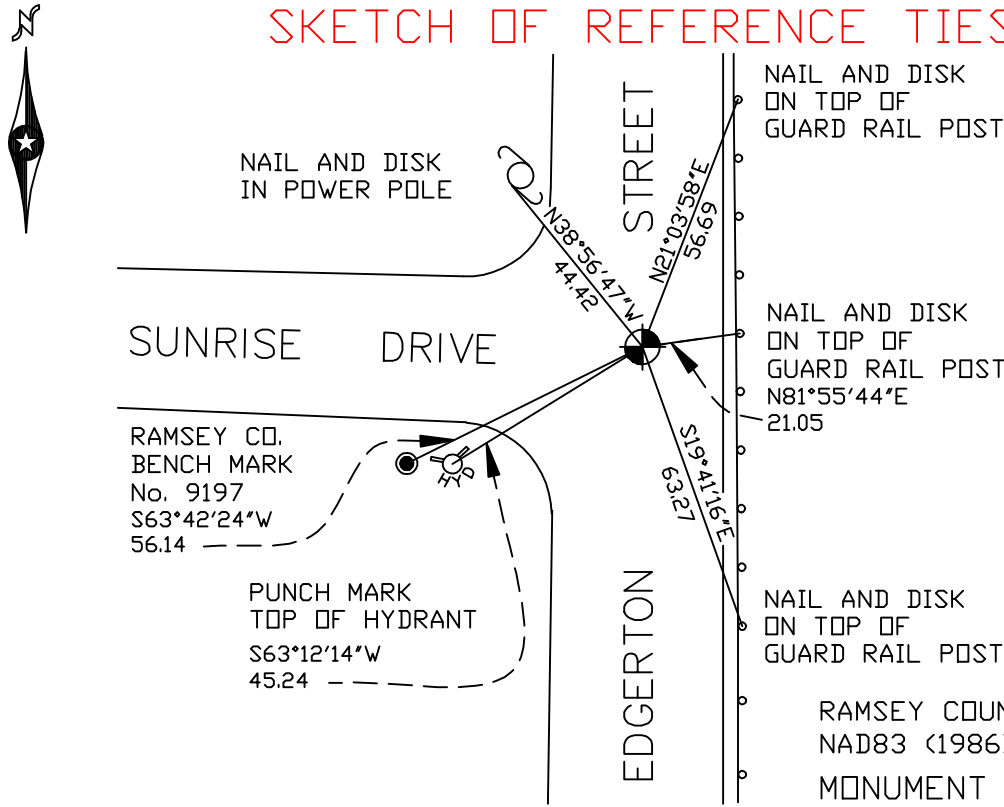
At the corner location shown on the sketch

On June 29, 2006 found a cast iron monument.

left monument as found     lowered monument     removed monument (explain)

On \_\_\_\_\_ placed a \_\_\_\_\_

### SKETCH OF REFERENCE TIES



ALL DISTANCES ARE SHOWN IN U.S. SURVEY FEET.  
BEARINGS ARE FOR TIE REFERENCE PURPOSES ONLY.

X = 579385.205 (Easting)  
Y = 181250.741 (Northing)

Statements of evidence relative to this corner are on the following page(s).

I hereby certify that this document and the data contained herein was prepared by me or under my direct supervision this \_\_\_\_\_ day of \_\_\_\_\_, 20\_\_\_\_.

SIGNATURE

Minnesota License No. \_\_\_\_\_

County Surveyor     Land Surveyor

OFFICE OF COUNTY SURVEYOR

County of Ramsey

I hereby certify that this document was filed in the County Surveyor's office on the \_\_\_\_ day of \_\_\_\_\_, 20\_\_\_\_.

David D. Claypool, P.L.S., County Surveyor

By \_\_\_\_\_, Deputy

## MONUMENT 385

**Found a granite monument down 4 in. and retied, September 18, 1974.**

**Found a cast iron monument, probably a 4 1/2 in. monument with the date of placement unknown; retied, August 10, 1990.**

**Retied monument down +/- 0.2 ft. , December 9, 1999.**

**Retied monument, June 29, 2006.**