

MONUMENT 383

CERTIFICATE OF LOCATION OF GOVERNMENT CORNER

Center of Section 7, Township 29 North, Range 22 West, County of Ramsey,
State of Minnesota.

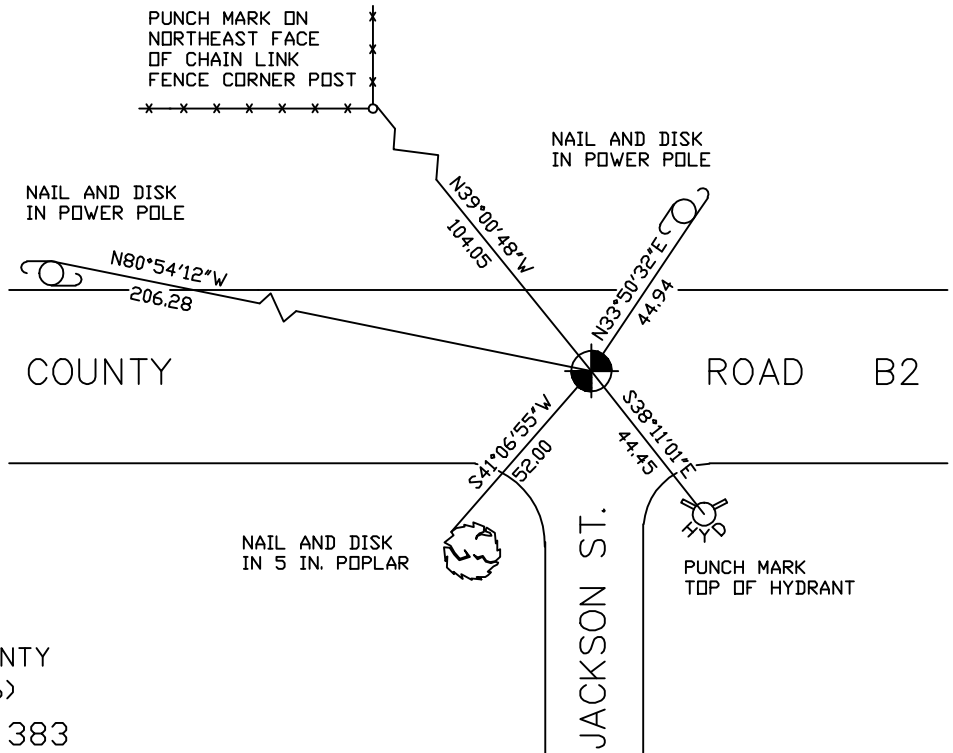
At the corner location shown on the sketch

On June 13, 2006 found a cast iron monument within a cast iron manhole assembly.

left monument as found lowered monument removed monument (explain)

On _____ placed a _____

SKETCH OF REFERENCE TIES



RAMSEY COUNTY
NAD83 (1986)
MONUMENT 383

X = 574134.649 (Easting)
Y = 181211.084 (Northing)

ALL DISTANCES ARE SHOWN IN U.S. SURVEY FEET.
BEARINGS ARE FOR TIE REFERENCE PURPOSES ONLY.

Statements of evidence relative to this corner are on the following page(s).

I hereby certify that this document and the data contained herein was prepared by me or under my direct supervision this _____ day of _____, 20____.

SIGNATURE

Minnesota License No. _____

County Surveyor Land Surveyor

OFFICE OF COUNTY SURVEYOR

County of Ramsey

I hereby certify that this document was filed in the County Surveyor's office on the ____ day of _____, 20____.

David D. Claypool, P.L.S., County Surveyor

By _____, Deputy

MONUMENT 383

Found granite monument flush, 1974.

Checked monument, September 12, 1977.

Retied monument, March 12, 1984.

Retied monument, August 10, 1990.

Retied monument, December 30, 2002.

Granite monument removed during construction, June, 2005.

Reestablished monument position from ties taken prior to construction, June 8, 2006.

Reset 20 in. cast iron monument down 9 in. within a cast iron manhole assembly, June 12, 2006.

Retied monument, June 13, 2006.