

MONUMENT 378

CERTIFICATE OF LOCATION OF GOVERNMENT CORNER

East Quarter Corner of Section 10, Township 29 North, Range 23 West, County of Ramsey, State of Minnesota.

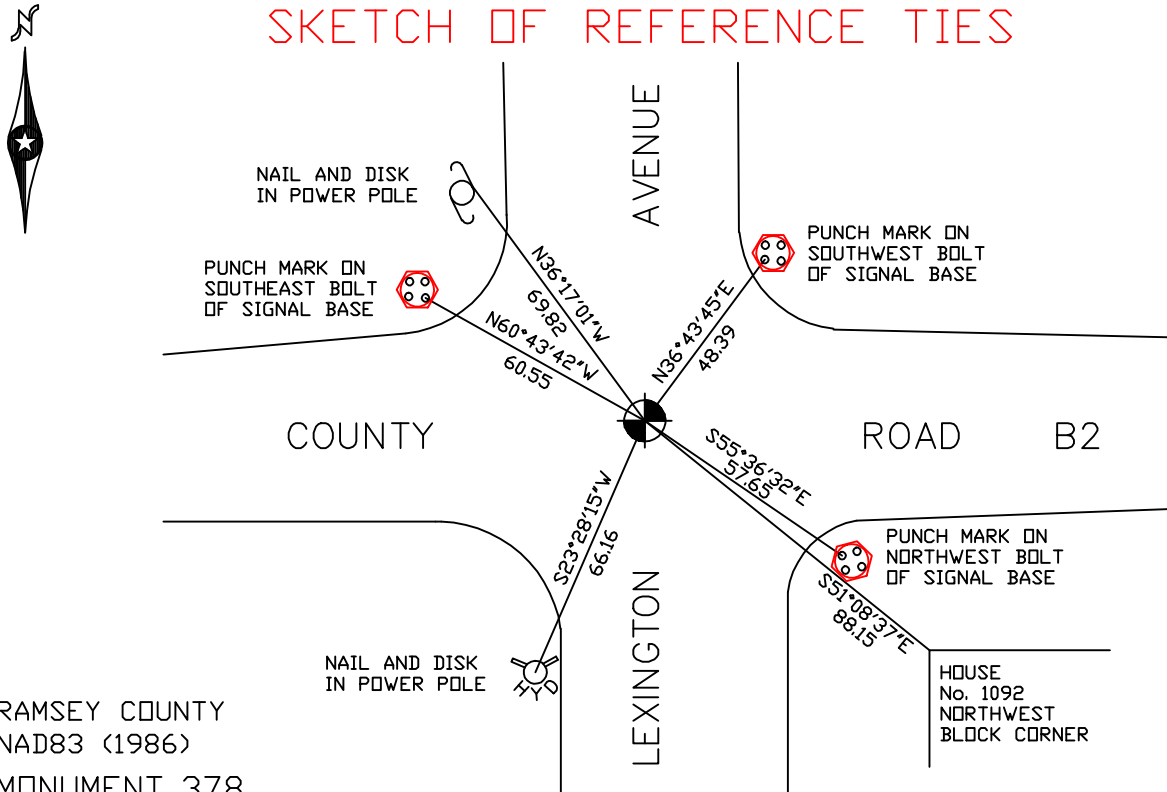
At the corner location shown on the sketch

On July 10, 2006 found a cast iron monument within a cast iron manhole assembly.

left monument as found lowered monument removed monument (explain)

On _____ placed a _____

SKETCH OF REFERENCE TIES



RAMSEY COUNTY
NAD83 (1986)
MONUMENT 378

X= 561237.059 (Easting)
Y= 181219.246 (Northing)

ALL DISTANCES ARE SHOWN IN U.S. SURVEY FEET.
BEARINGS ARE FOR TIE REFERENCE PURPOSES ONLY.

Statements of evidence relative to this corner are on the following page(s).

I hereby certify that this document and the data contained herein was prepared by me or under my direct supervision this _____ day of _____, 20____.

SIGNATURE

Minnesota License No. _____

County Surveyor Land Surveyor

OFFICE OF COUNTY SURVEYOR

County of Ramsey

I hereby certify that this document was filed in the County Surveyor's office on the ____ day of _____, 20____.

David D. Claypool, P.L.S., County Surveyor

By _____, Deputy

MONUMENT 378

Found granite monument, down 2 in. and retied, July 23, 1974.

Placed cast iron cap and bolt monument, October 10, 1974.

Monument destroyed by construction, 1979

Reset 20 in. cast iron monument, April 17, 1981.

Retied monument, August 10, 1990.

Tied monument and set 1.5 ft. below grade, April 17 and 28, 1998.

Set cast iron manhole assembly over monument, July 24, 1998.

Retied monument, July 10, 2006.