

MONUMENT 371

CERTIFICATE OF LOCATION OF GOVERNMENT CORNER

Northeast Corner of Section 12, Township 29 North, Range 22 West, County of Ramsey, State of Minnesota.

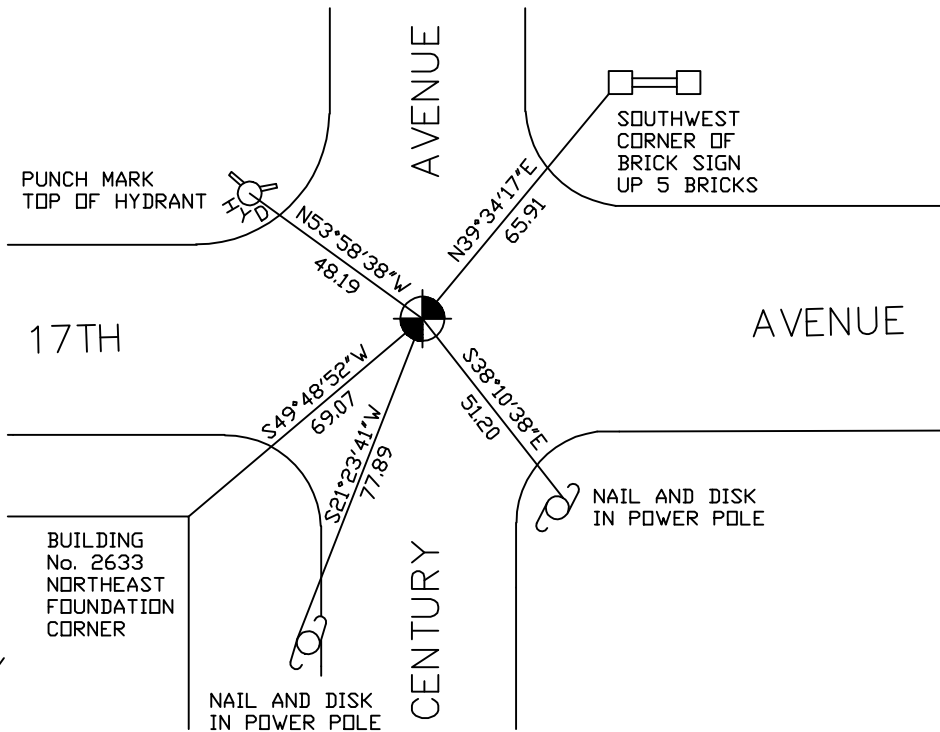
At the corner location shown on the sketch

On June 23, 2006 found a cast iron monument, flush.

left monument as found lowered monument removed monument (explain)

On _____ placed a _____

SKETCH OF REFERENCE TIES



RAMSEY COUNTY
NAD83 (1986)
MONUMENT 371

X= 603064.566 (Easting)
Y= 184147.922 (Northing)

ALL DISTANCES ARE SHOWN IN U.S. SURVEY FEET.
BEARINGS ARE FOR TIE REFERENCE PURPOSES ONLY.

Statements of evidence relative to this corner are on the following page(s).

I hereby certify that this document and the data contained herein was prepared by me or under my direct supervision this _____ day of _____, 20____.

SIGNATURE

Minnesota License No. _____

County Surveyor Land Surveyor

OFFICE OF COUNTY SURVEYOR

County of Ramsey

I hereby certify that this document was filed in the County Surveyor's office on the ____ day of _____, 20____.

David D. Claypool, P.L.S., County Surveyor

By _____, Deputy

MONUMENT 371

Found brass cap marked "Minn. H.D. Control Monument", "N.E. Cor. Sec. 12". Cap on 3/4 in. by 24 in. long solid iron; iron inside 2 in. by 5 1/2 in. iron pipe in old concrete road. Dug down 4.6 ft. and found nothing more. Set a 20 in. cast iron monument, March 10, 1976.

Tied cast iron monument, November 30, 1982.

Retied monument, July 17, 1990.

Found 4 5/8 in. Washington County cast iron monument. Cement deteriorated; dug out monument and found a 20 in. cast iron monument broken off; re-cemented 4 5/8 in. cast iron monument back in place, August 17, 1999.

Retied monument, October 18, 2000.

Retied monument, June 23, 2006.