

MONUMENT 370

CERTIFICATE OF LOCATION OF GOVERNMENT CORNER

North Quarter Corner of Section 12, Township 29 North, Range 22 West,
County of Ramsey, State of Minnesota.

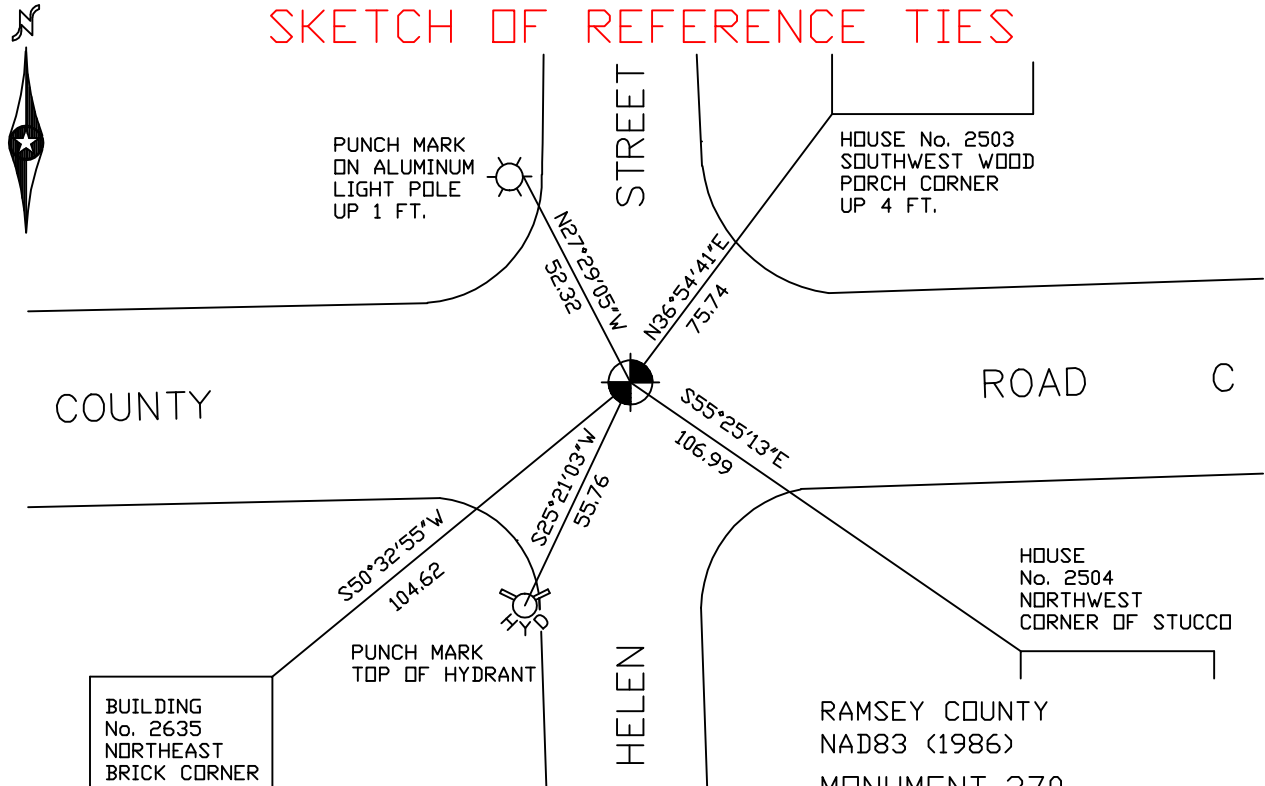
At the corner location shown on the sketch

On June 23, 2006 found a cast iron monument within a cast iron manhole assembly.

left monument as found lowered monument removed monument (explain)

On _____ placed a _____

SKETCH OF REFERENCE TIES



ALL DISTANCES ARE SHOWN IN U.S. SURVEY FEET.
BEARINGS ARE FOR TIE REFERENCE PURPOSES ONLY.

RAMSEY COUNTY
NAD83 (1986)
MONUMENT 370
X = 600455.271 (Easting)
Y = 184082.676 (Northing)

Statements of evidence relative to this corner are on the following page(s).

I hereby certify that this document and the data contained herein was prepared by me or under my direct supervision this _____ day of _____, 20____.

SIGNATURE

Minnesota License No. _____

County Surveyor Land Surveyor

OFFICE OF COUNTY SURVEYOR

County of Ramsey

I hereby certify that this document was filed in the County Surveyor's office on the ____ day of _____, 20____.

David D. Claypool, P.L.S., County Surveyor

By _____, Deputy

MONUMENT 370

**Found granite monument down 2 in.; set cast iron cap monument,
June 14, 1976.**

Tied cast iron monument, November 30, 1982.

Retied monument, July 17, 1990.

Retied monument, October 18, 2000.

**Monument lowered within a cast iron manhole assembly for mill and overlay
project, July 15, 2005.**

Tied monument, June 23, 2006.