

MONUMENT 362

CERTIFICATE OF LOCATION OF GOVERNMENT CORNER

North Quarter Corner of Section 8, Township 29 North, Range 22 West, County of Ramsey, State of Minnesota.

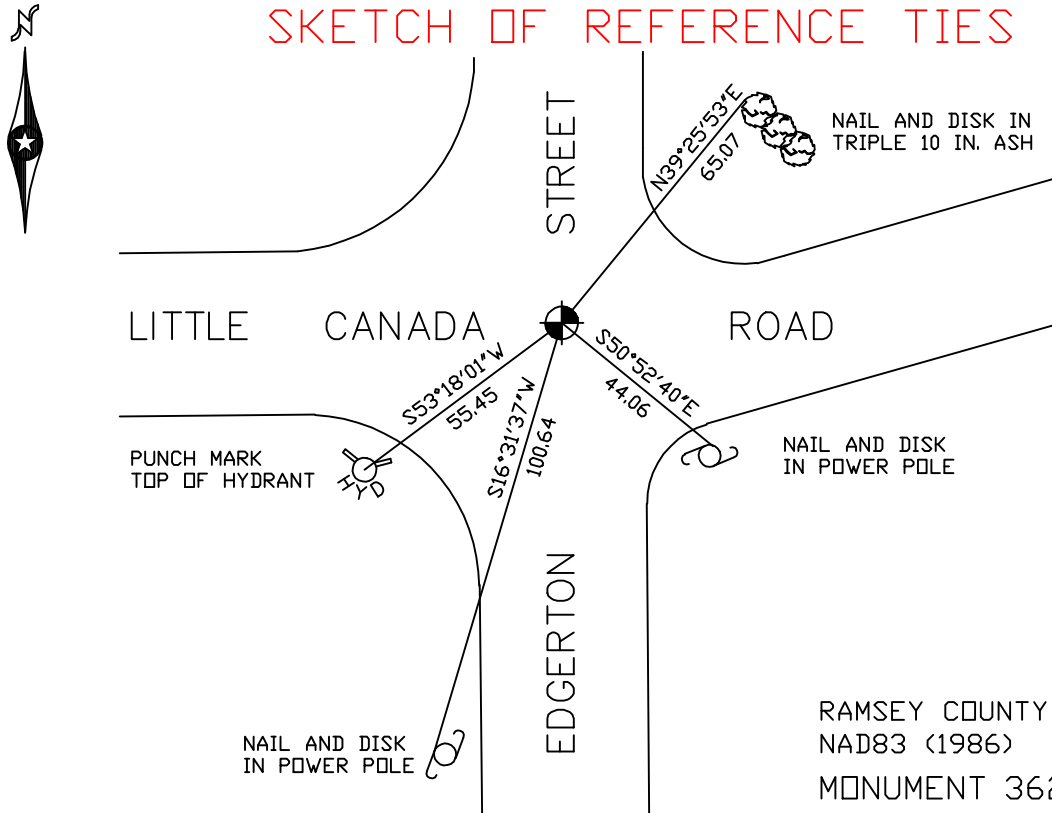
At the corner location shown on the sketch

On June 27, 2006 found a cast iron monument.

left monument as found lowered monument removed monument (explain)

On _____ placed a _____

SKETCH OF REFERENCE TIES



ALL DISTANCES ARE SHOWN IN U.S. SURVEY FEET.
BEARINGS ARE FOR TIE REFERENCE PURPOSES ONLY.

RAMSEY COUNTY
NAD83 (1986)
MONUMENT 362
X= 579361.893 (Easting)
Y= 183895.272 (Northing)

Statements of evidence relative to this corner are on the following page(s).

I hereby certify that this document and the data contained herein was prepared by me or under my direct supervision this _____ day of _____, 20____.

SIGNATURE

Minnesota License No. _____

County Surveyor Land Surveyor

OFFICE OF COUNTY SURVEYOR

County of Ramsey

I hereby certify that this document was filed in the County Surveyor's office on the ____ day of _____, 20____.

David D. Claypool, P.L.S., County Surveyor

By _____, Deputy

MONUMENT 362

Found iron over granite monument, down 0.39 ft.; set short cast iron monument and tied, August 19, 1975.

Checked monument, May 11, 1981.

Retied monument, July 20, 1983.

Retied monument, August 16, 1990.

Short cast iron monument gone; Maintenance Department road milling project on Little Canada Road, 1992.

Granite monument now down 4 in.; set a cast iron cap and bolt monument, September 8, 1994.

Retied monument, December 9, 1999.

Retied monument, June 27, 2006.