

# MONUMENT 355

## CERTIFICATE OF LOCATION OF GOVERNMENT CORNER

Southwest Corner of Section 2, Township 29 North, Range 23 West, County of Ramsey, State of Minnesota.

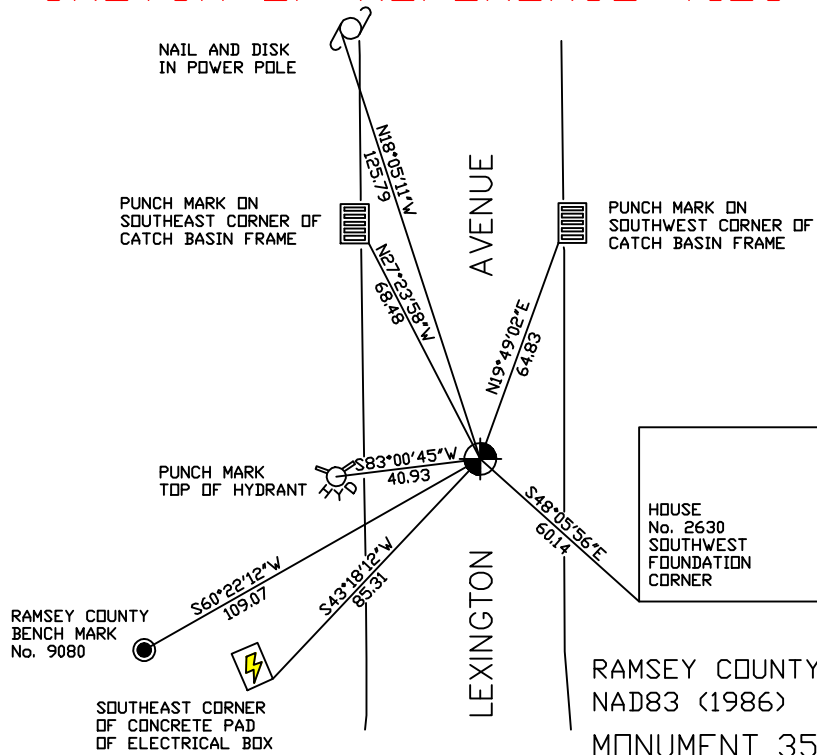
At the corner location shown on the sketch

On June 28, 2006 found a cast iron monument within a cast iron manhole assembly.

left monument as found     lowered monument     removed monument (explain)

On \_\_\_\_\_ placed a \_\_\_\_\_

### SKETCH OF REFERENCE TIES



ALL DISTANCES ARE SHOWN IN U.S. SURVEY FEET.  
BEARINGS ARE FOR TIE REFERENCE PURPOSES ONLY.

RAMSEY COUNTY  
NAD83 (1986)  
MONUMENT 355  
X= 561192.487 (Easting)  
Y= 183799.312 (Northing)

Statements of evidence relative to this corner are on the following page(s).

I hereby certify that this document and the data contained herein was prepared by me or under my direct supervision this \_\_\_\_\_ day of \_\_\_\_\_, 20\_\_\_\_.

SIGNATURE

Minnesota License No. \_\_\_\_\_

County Surveyor     Land Surveyor

OFFICE OF COUNTY SURVEYOR

County of Ramsey

I hereby certify that this document was filed in the County Surveyor's office on the \_\_\_\_ day of \_\_\_\_\_, 20\_\_\_\_.

David D. Claypool, P.L.S., County Surveyor

By \_\_\_\_\_, Deputy

## MONUMENT 355

**Found a cast iron monument flush and tied, July 29, 1974.**

**Monument destroyed during construction; set a 20 in. cast iron monument, September, 1980.**

**Tied monument and set 20 in. cast iron monument 1.5 ft. below grade, April 30, 1998.**

**Set cast iron manhole assembly over monument, July 23, 1998.**

**Retied monument, December 1, 1998.**

**Retied monument, June 28, 2006.**