

MONUMENT 34

CERTIFICATE OF LOCATION OF GOVERNMENT CORNER

East Quarter Corner of Section 3, Township 30 North, Range 23 West,
County of Ramsey, State of Minnesota.

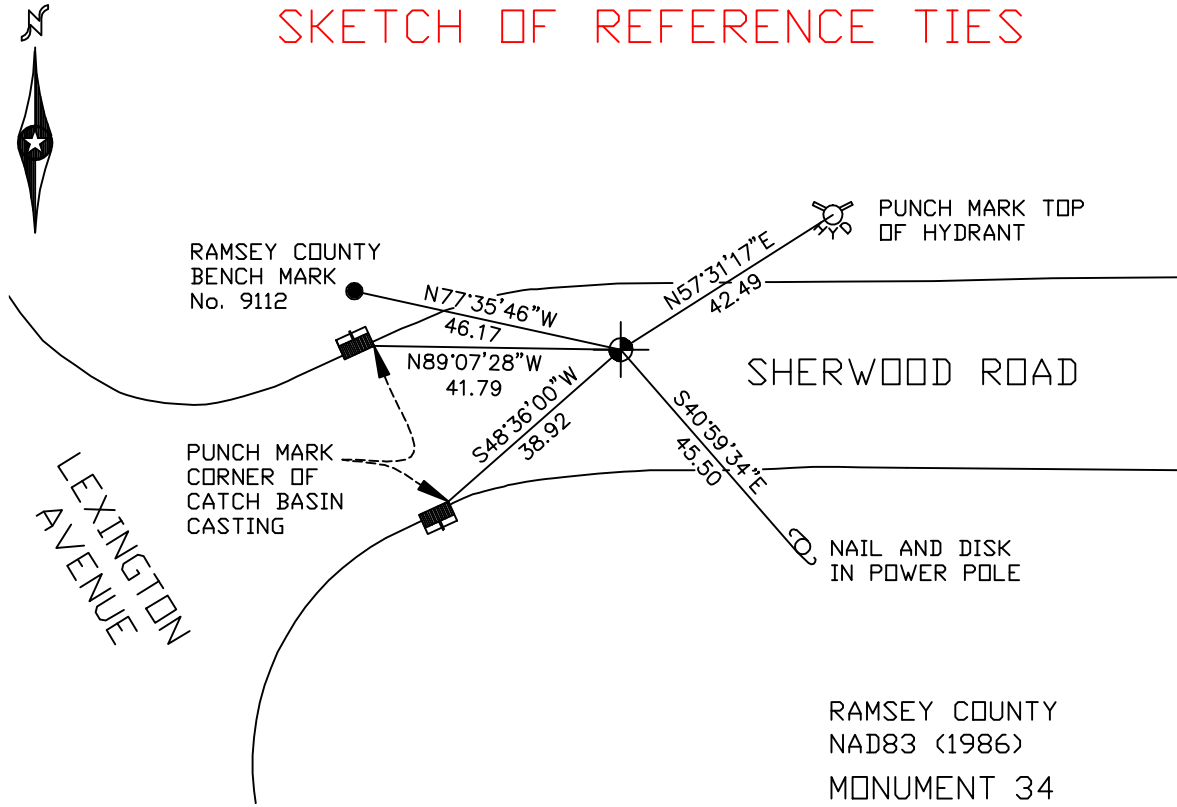
At the corner location shown on the sketch

On August 16, 2006 found a cast iron monument, flush.

left monument as found lowered monument removed monument (explain)

On _____ placed a _____

SKETCH OF REFERENCE TIES



RAMSEY COUNTY
NAD83 (1986)
MONUMENT 34
X= 560812.486 (Easting)
Y= 218294.784 (Northing)

ALL DISTANCES ARE SHOWN IN U.S. SURVEY FEET.
BEARINGS ARE FOR TIE REFERENCE PURPOSES ONLY.

Statements of evidence relative to this corner are on the following page(s).

I hereby certify that this document and the data contained herein was prepared by me or under my direct supervision this _____ day of _____, 20____.

SIGNATURE

Minnesota License No. _____

County Surveyor Land Surveyor

OFFICE OF COUNTY SURVEYOR

County of Ramsey

I hereby certify that this document was filed in the County Surveyor's office on the ____ day of _____, 20____.

David D. Claypool, P.L.S., County Surveyor

By _____, Deputy

MONUMENT 34

Found iron monument in concrete, granite monument down 0.58 ft., set short (4-3/8 in.) cast iron monument, July 17, 1975.

Retied monument, July 29, 1975.

Monument removed for construction department, 1990.

Set 20 in. cast iron monument flush, October 14, 1992.

Retied monument, September 2, 1993.

Cemented monument and redrilled hole, June 14, 1999.

Retied monument, August 16, 2006.