

# MONUMENT 346

## CERTIFICATE OF LOCATION OF GOVERNMENT CORNER

East Quarter Corner of Section 2, Township 29 North, Range 22 West,  
County of Ramsey, State of Minnesota.

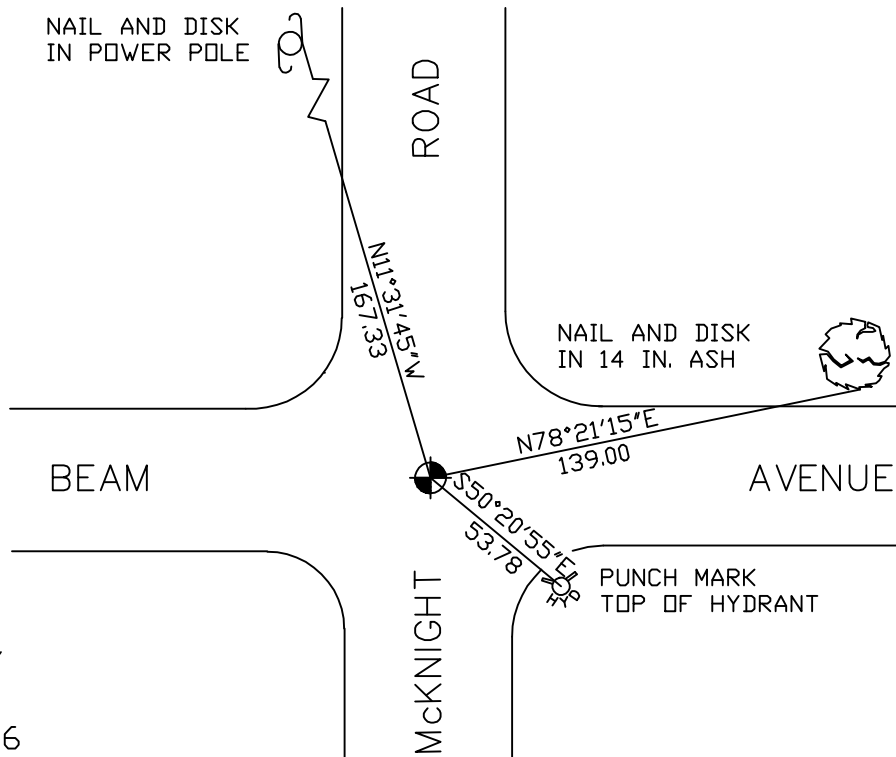
At the corner location shown on the sketch

On June 22, 2006 found a cast iron monument.

left monument as found     lowered monument     removed monument (explain)

On \_\_\_\_\_ placed a \_\_\_\_\_

### SKETCH OF REFERENCE TIES



RAMSEY COUNTY  
NAD83 (1986)  
MONUMENT 346

X= 597815.986 (Easting)  
Y= 186644.383 (Northing)

ALL DISTANCES ARE SHOWN IN U.S. SURVEY FEET.  
BEARINGS ARE FOR TIE REFERENCE PURPOSES ONLY.

Statements of evidence relative to this corner are on the following page(s).

I hereby certify that this document and the data  
contained herein was prepared by me or under  
my direct supervision this \_\_\_\_\_ day  
of \_\_\_\_\_, 20\_\_\_\_.

SIGNATURE

Minnesota License No. \_\_\_\_\_

County Surveyor     Land Surveyor

OFFICE OF COUNTY SURVEYOR

County of Ramsey

I hereby certify that this document was filed in  
the County Surveyor's office on the \_\_\_\_ day  
of \_\_\_\_\_, 20\_\_\_\_.

David D. Claypool, P.L.S., County Surveyor

By \_\_\_\_\_, Deputy

## MONUMENT 346

**Found 3/4 in. iron pipe down 0.5 ft., 1974.**

**Cast iron monument set by Don Campbell, May 23, 1974.**

**Checked monument, September 12, 1977.**

**Checked monument, July 18, 1984.**

**Retied monument, August 15, 1990.**

**Retied monument, September 23, 1999.**

**Retied monument, June 22, 2006.**