

MONUMENT 33

CERTIFICATE OF LOCATION OF GOVERNMENT CORNER

Center of Section 3, Township 30 North, Range 23 West, County of Ramsey,
State of Minnesota.

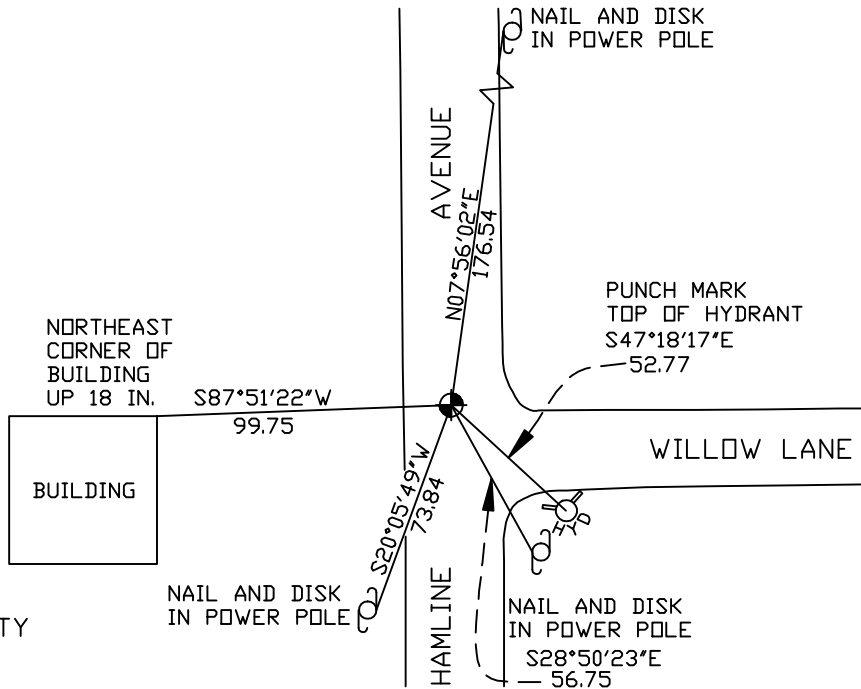
At the corner location shown on the sketch

On August 18, 2006 found a cast iron monument, down 0.2 feet.

left monument as found lowered monument removed monument (explain)

On _____ placed a _____

SKETCH OF REFERENCE TIES



RAMSEY COUNTY
NAD83 (1986)
MONUMENT 33

X= 558170.041 (Easting)
Y= 218270.671 (Northing)

ALL DISTANCES ARE SHOWN IN U.S. SURVEY FEET.
BEARINGS ARE FOR TIE REFERENCE PURPOSES ONLY.

Statements of evidence relative to this corner are on the following page(s).

I hereby certify that this document and the data contained herein was prepared by me or under my direct supervision this _____ day of _____, 20____.

SIGNATURE

Minnesota License No. _____

County Surveyor Land Surveyor

OFFICE OF COUNTY SURVEYOR

County of Ramsey

I hereby certify that this document was filed in the County Surveyor's office on the ____ day of _____, 20____.

David D. Claypool, P.L.S., County Surveyor

By _____, Deputy

MONUMENT 33

Found granite monument down 0.4 ft. and retied, August 23, 1974.

**Set short (4-1/2 in.) cast iron monument on top of granite monument,
November 18, 1974.**

Cast iron monument down 0.2 ft., retied, July 18, 1990.

Retied monument, March 21, 2001.

Retied monument, August 18, 2006.