

# MONUMENT 330

## CERTIFICATE OF LOCATION OF GOVERNMENT CORNER

East Quarter Corner of Section 4, Township 29 North, Range 23 West, County of Ramsey, State of Minnesota.

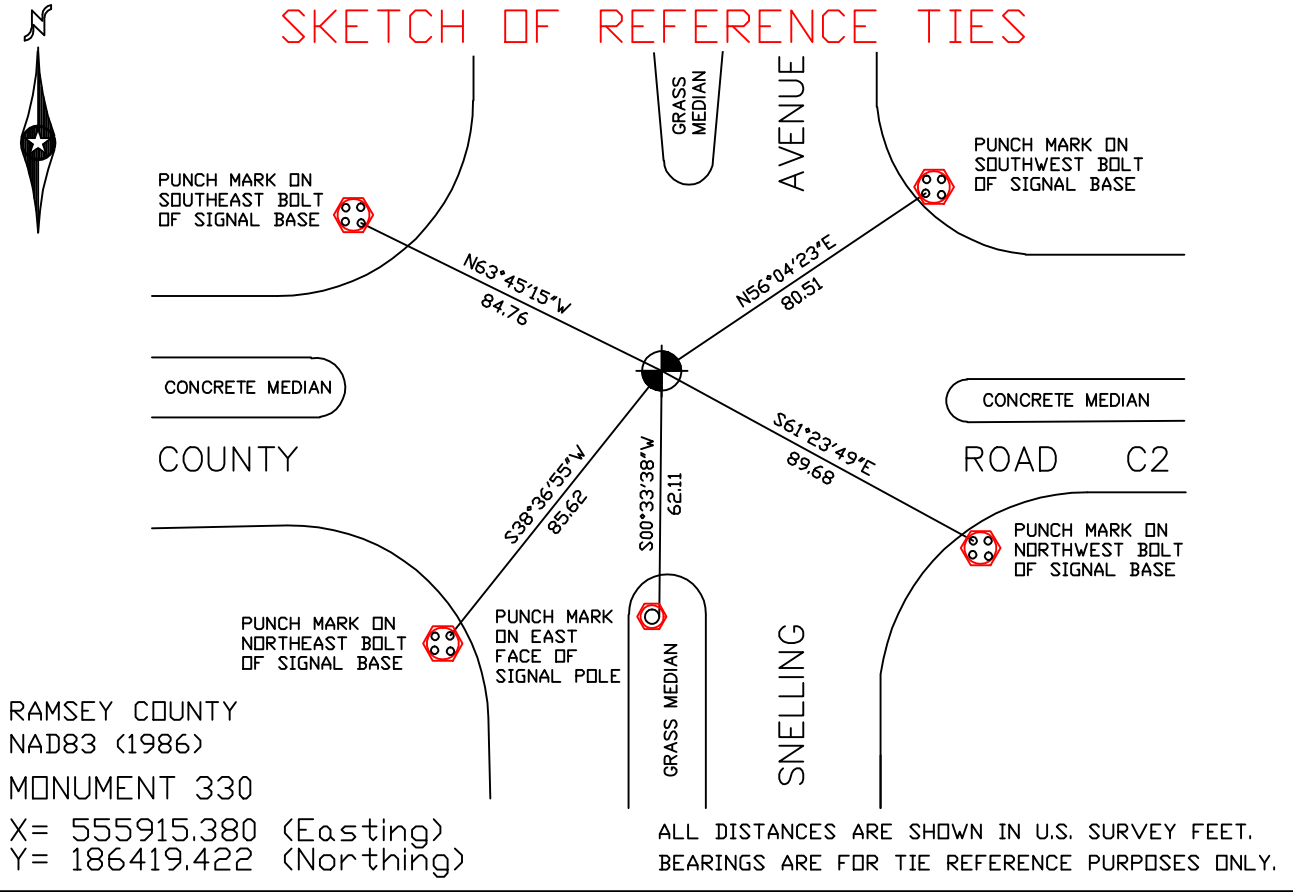
At the corner location shown on the sketch

On June 28, 2006 found a cast iron monument.

left monument as found     lowered monument     removed monument (explain)

On \_\_\_\_\_ placed a \_\_\_\_\_

### SKETCH OF REFERENCE TIES



Statements of evidence relative to this corner are on the following page(s).

I hereby certify that this document and the data contained herein was prepared by me or under my direct supervision this \_\_\_\_\_ day of \_\_\_\_\_, 20\_\_\_\_.

SIGNATURE

Minnesota License No. \_\_\_\_\_

County Surveyor     Land Surveyor

OFFICE OF COUNTY SURVEYOR

County of Ramsey

I hereby certify that this document was filed in the County Surveyor's office on the \_\_\_\_ day of \_\_\_\_\_, 20\_\_\_\_.

David D. Claypool, P.L.S., County Surveyor

By \_\_\_\_\_, Deputy

## MONUMENT 330

**Found a cast iron monument down 0.25 ft., June 22, 1976.**

**Reset monument to grade, July 26, 1976.**

**Checked monument, April 17, 1977.**

**Monument destroyed by MN/DOT, 1983.**

**Relocated position and placed P.K. nail, 1984.**

**P.K. nail removed by MN/DOT culvert, 1987.**

**Set a 20 in. cast iron monument down +/- 2 in., September, 1994.**

**Retied monument down +/- 0.15 ft., March 28, 2001.**

**Retied monument, June 28, 2006.**