

MONUMENT 325

CERTIFICATE OF LOCATION OF GOVERNMENT CORNER

Northeast Corner of Section 1, Township 29 North, Range 22 West, County of Ramsey, State of Minnesota.

At the corner location shown on the sketch

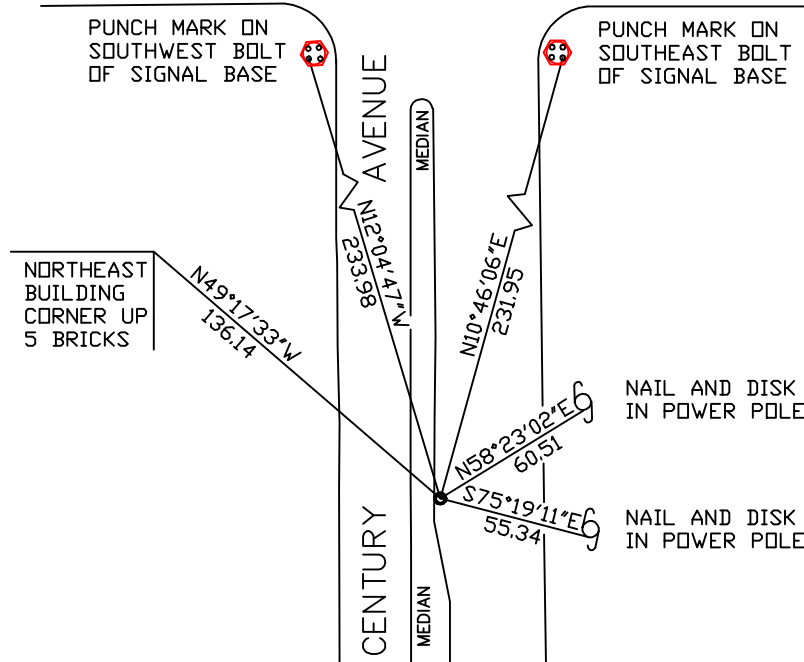
On June 26, 2006 found a 3/4 inch iron pin, flush.

left monument as found lowered monument removed monument (explain)

On _____ placed a _____

SKETCH OF REFERENCE TIES

COUNTY ROAD D



RAMSEY COUNTY
NAD83 (1986)

MONUMENT 325

X= 603041.637 (Easting)
Y= 189464.878 (Northing)

ALL DISTANCES ARE SHOWN IN U.S. SURVEY FEET.
BEARINGS ARE FOR TIE REFERENCE PURPOSES ONLY.

Statements of evidence relative to this corner are on the following page(s).

I hereby certify that this document and the data contained herein was prepared by me or under my direct supervision this _____ day of _____, 20____.

SIGNATURE

Minnesota License No. _____

County Surveyor Land Surveyor

OFFICE OF COUNTY SURVEYOR

County of Ramsey

I hereby certify that this document was filed in the County Surveyor's office on the ____ day of _____, 20____.

David D. Claypool, P.L.S., County Surveyor

By _____, Deputy

MONUMENT 325

Found 3/4 in. iron pin with MN/DOT cap flush, 1975.

Retied monument, November 30, 1982.

Retied monument, August 8, 1990.

**Retied monument in crack between curb gutter and bituminous,
September 21, 1999.**

Removed bituminous around pin and replaced with concrete, July 2, 2005.

Retied monument, June 26, 2006.