

# MONUMENT 322

## CERTIFICATE OF LOCATION OF GOVERNMENT CORNER

North Quarter Corner of Section 2, Township 29 North, Range 22 West, County of Ramsey, State of Minnesota.

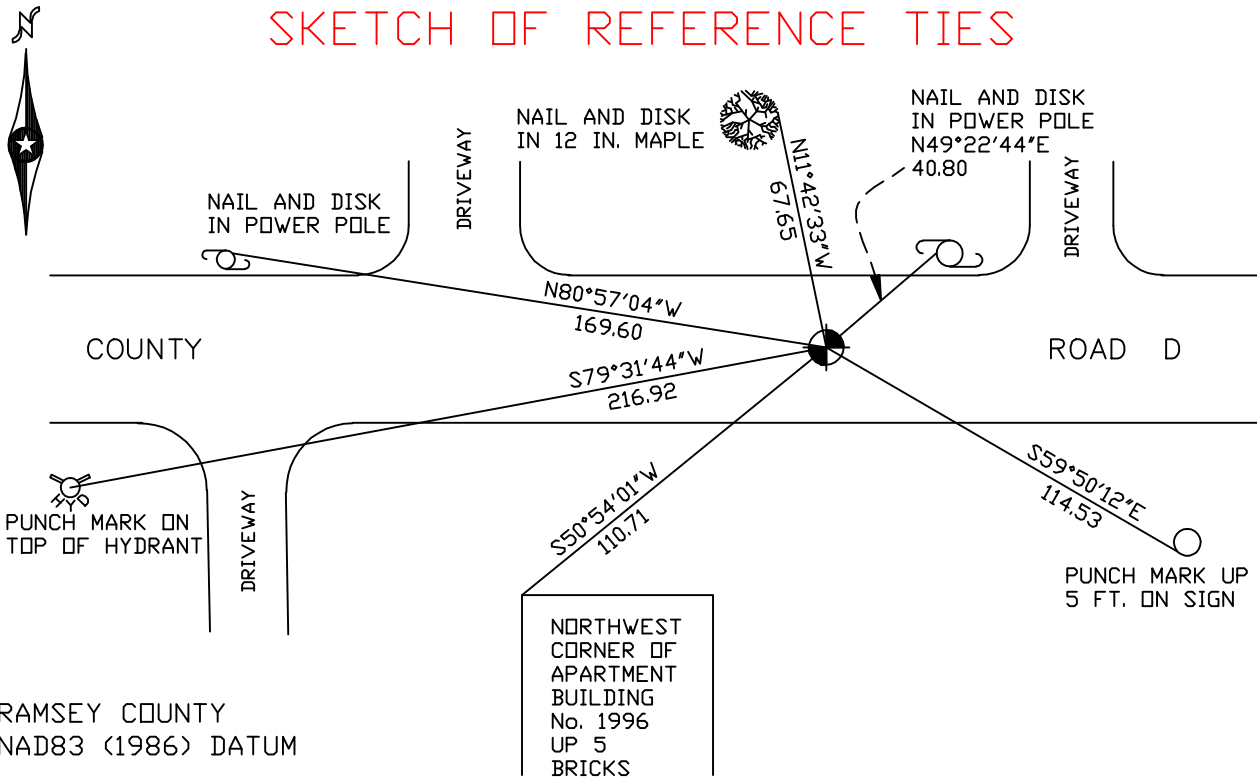
At the corner location shown on the sketch

On June 22, 2006 found a cast iron monument within a cast iron manhole assembly.

left monument as found     lowered monument     removed monument (explain)

On \_\_\_\_\_ placed a \_\_\_\_\_

### SKETCH OF REFERENCE TIES



RAMSEY COUNTY  
NAD83 (1986) DATUM  
MONUMENT 322

X= 595129.806 (Easting)  
Y= 189426.836 (Northing)

ALL DISTANCES ARE SHOWN IN U.S. SURVEY FEET.  
BEARINGS ARE FOR TIE REFERENCE PURPOSES ONLY.

Statements of evidence relative to this corner are on the following page(s).

I hereby certify that this document and the data contained herein was prepared by me or under my direct supervision this \_\_\_\_\_ day of \_\_\_\_\_, 20\_\_\_\_.

SIGNATURE

Minnesota License No. \_\_\_\_\_

County Surveyor     Land Surveyor

OFFICE OF COUNTY SURVEYOR

County of Ramsey

I hereby certify that this document was filed in the County Surveyor's office on the \_\_\_\_ day of \_\_\_\_\_, 20\_\_\_\_.

David D. Claypool, P.L.S., County Surveyor

By \_\_\_\_\_, Deputy

## MONUMENT 322

**Found granite monument down 0.34 ft.; set cap, 1975.**

**Checked monument, June 24, 1977.**

**Retied monument, April 15, 1988.**

**Checked, August 8, 1990.**

**Retied monument, September 23, 1999.**

**Tied monument for MW. reconstruction, April 29, 2002.**

**Set 20 in. cast iron monument down 18 in. within a cast iron manhole assembly, August 16, 2002.**

**Retied monument, June 22, 2006.**