

MONUMENT 319

CERTIFICATE OF LOCATION OF GOVERNMENT CORNER

Northwest Corner of Section 3, Township 29 North, Range 22 West, County of Ramsey, State of Minnesota.

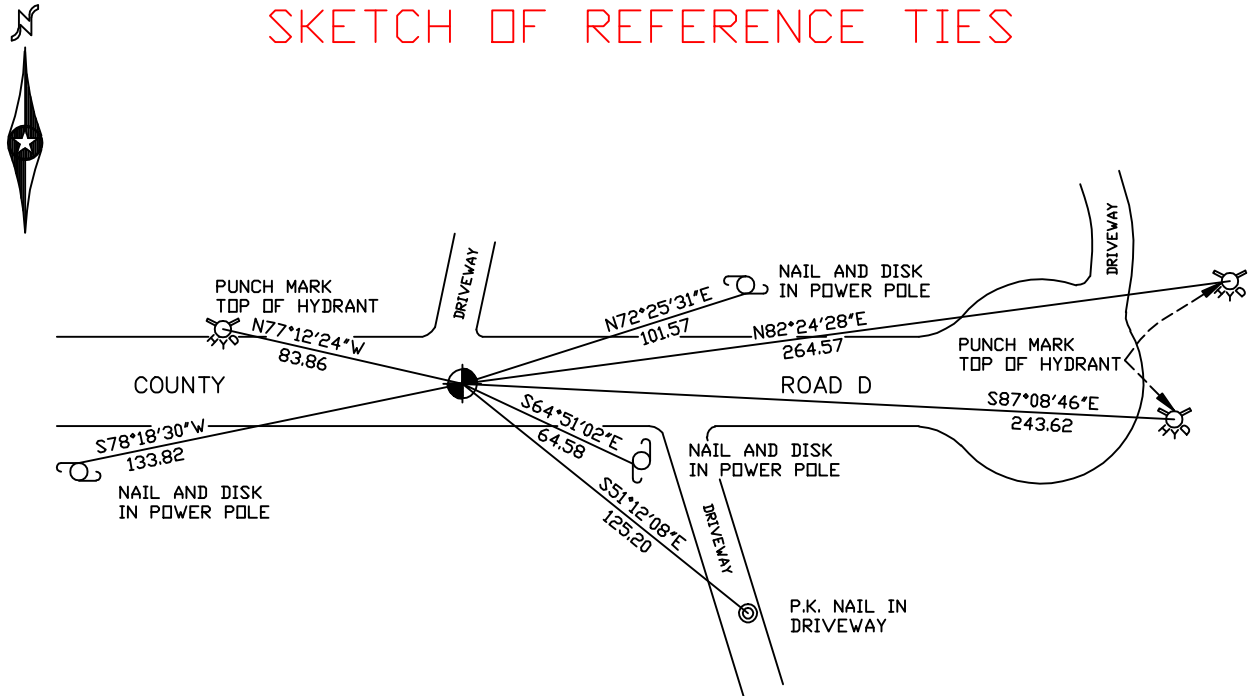
At the corner location shown on the sketch

On August 21, 2006 found a cast iron monument within a cast iron manhole assembly.

left monument as found lowered monument removed monument (explain)

On _____ placed a _____

SKETCH OF REFERENCE TIES



RAMSEY COUNTY

NAD83 (1986)

MONUMENT 319

X = 587211.400 (Easting)
Y = 189414.051 (Northing)

ALL DISTANCES ARE SHOWN IN U.S. SURVEY FEET.
BEARINGS ARE FOR TIE REFERENCE PURPOSES ONLY.

Statements of evidence relative to this corner are on the following page(s).

I hereby certify that this document and the data contained herein was prepared by me or under my direct supervision this _____ day of _____, 20____.

SIGNATURE

Minnesota License No. _____

County Surveyor Land Surveyor

OFFICE OF COUNTY SURVEYOR

County of Ramsey

I hereby certify that this document was filed in the County Surveyor's office on the ____ day of _____, 20____.

David D. Claypool, P.L.S., County Surveyor

By _____, Deputy

MONUMENT 319

Found granite monument down 0.5 ft. and retied, July 9, 1974.

Placed short cast iron over monument, September 18, 1974.

Removed short cast iron, maintenance to remove granite monument, June 4, 1990.

Relocated position and retied, July 16, 1990.

Found granite monument broken off down +/- 1 ft., July 20, 1990.

Placed short ($4\frac{5}{8}$ in.) cast iron monument, July 25, 1990.

Retied monument, September 21, 1999.

Tied out monument prior to road construction, November 9, 2004.

Replaced monument within a cast iron manhole assembly, August 3, 2006.

Retied monument, August 21, 2006.