

# MONUMENT 318

## CERTIFICATE OF LOCATION OF GOVERNMENT CORNER

South Quarter Corner of Section 33, Township 30 North, Range 22 West,  
County of Ramsey, State of Minnesota.

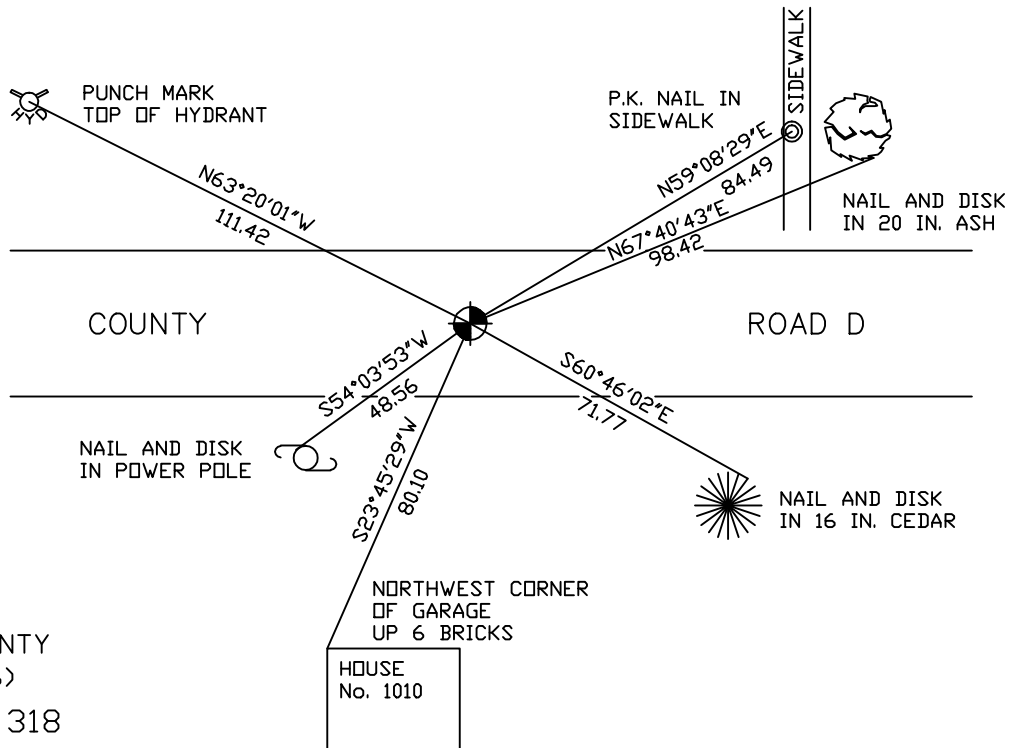
At the corner location shown on the sketch

On June 20, 2006 found a cast iron monument, flush.

left monument as found     lowered monument     removed monument (explain)

On \_\_\_\_\_ placed a \_\_\_\_\_

### SKETCH OF REFERENCE TIES



RAMSEY COUNTY

NAD83 (1986)

MONUMENT 318

X= 584566.425 (Easting)  
Y= 189415.998 (Northing)

ALL DISTANCES ARE SHOWN IN U.S. SURVEY FEET.  
BEARINGS ARE FOR TIE REFERENCE PURPOSES ONLY.

Statements of evidence relative to this corner are on the following page(s).

I hereby certify that this document and the data contained herein was prepared by me or under my direct supervision this \_\_\_\_\_ day of \_\_\_\_\_, 20\_\_\_\_.

SIGNATURE

Minnesota License No. \_\_\_\_\_

County Surveyor     Land Surveyor

OFFICE OF COUNTY SURVEYOR

County of Ramsey

I hereby certify that this document was filed in the County Surveyor's office on the \_\_\_\_ day of \_\_\_\_\_, 20\_\_\_\_.

David D. Claypool, P.L.S., County Surveyor

By \_\_\_\_\_, Deputy

## MONUMENT 318

**Found granite monument, down 0.4 ft.; placed cast iron cap and bolt monument over granite monument and retied, September 18, 1974.**

**Checked monument, June 24, 1977.**

**Granite monument in wrong place, removed cap and placed 20 in. cast iron monument; wrong location in approximately 1926; May, 1984.**

**Tied out cast iron monument for maintenance construction, March 27, 1990.**

**Removed 20 in. cast iron monument, April 10, 1990.**

**Maintenance removed granite monument, May +/- 3, 1990.**

**Relocated position for cast iron monument and placed 6 in. spike for old granite monument (incorrect  $\frac{1}{4}$  corner location), July 13, 1990.**

**Retied correct position, July 16, 1990.**

**Placed 20 in. cast iron monument, July 20, 1990.**

**Retied monument, September 20, 1999.**

**Retied monument, June 20, 2006.**