

MONUMENT 317

CERTIFICATE OF LOCATION OF GOVERNMENT CORNER

Southwest Corner of Section 33, Township 30 North, Range 22 West, County of Ramsey, State of Minnesota.

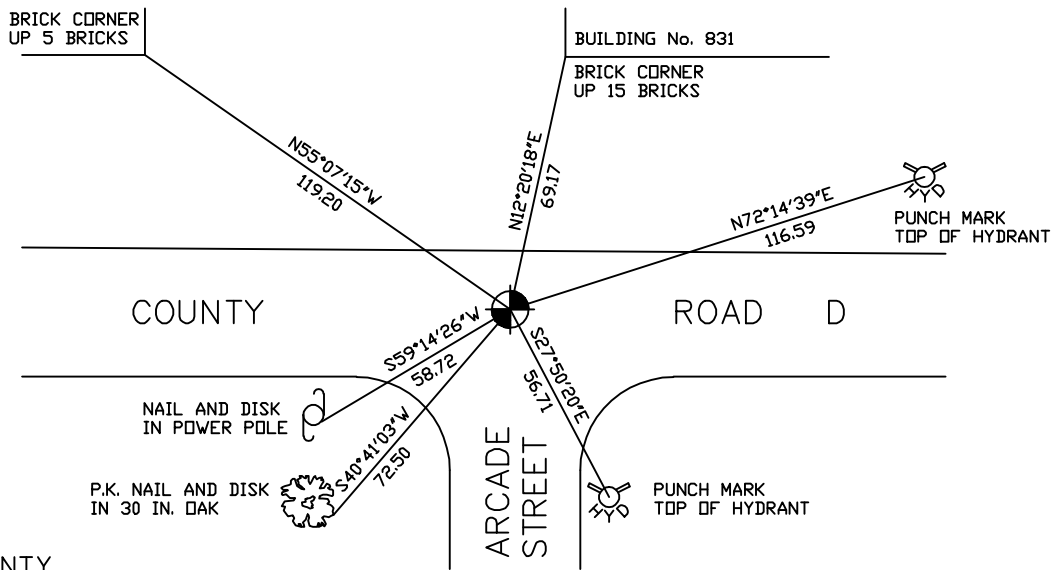
At the corner location shown on the sketch

On June 19, 2006 found a cast iron monument, flush.

left monument as found lowered monument removed monument (explain)

On _____ placed a _____

SKETCH OF REFERENCE TIES



RAMSEY COUNTY

NAD83 (1986)

MONUMENT 317

X= 581913.558 (Easting)
Y= 189407.620 (Northing)

ALL DISTANCES ARE SHOWN IN U.S. SURVEY FEET.
BEARINGS ARE FOR TIE REFERENCE PURPOSES ONLY.

Statements of evidence relative to this corner are on the following page(s).

I hereby certify that this document and the data contained herein was prepared by me or under my direct supervision this _____ day of _____, 20____.

SIGNATURE

Minnesota License No. _____

County Surveyor Land Surveyor

OFFICE OF COUNTY SURVEYOR

County of Ramsey

I hereby certify that this document was filed in the County Surveyor's office on the ____ day of _____, 20____.

David D. Claypool, P.L.S., County Surveyor

By _____, Deputy

MONUMENT 317

Found a granite monument, down 0.2 ft.; placed a cast iron cap and bolt monument in concrete over granite monument, May 24, 1974.

Retied monument, September 18, 1974.

Checked monument, June 24, 1977.

Checked monument, down 0.25 ft., August 8, 1990.

Retied monument, September 20, 1999.

Retied monument, June 19, 2006.