

MONUMENT 309

CERTIFICATE OF LOCATION OF GOVERNMENT CORNER

Northeast Corner of Section 3, Township 29 North, Range 23 West, County of Ramsey, State of Minnesota.

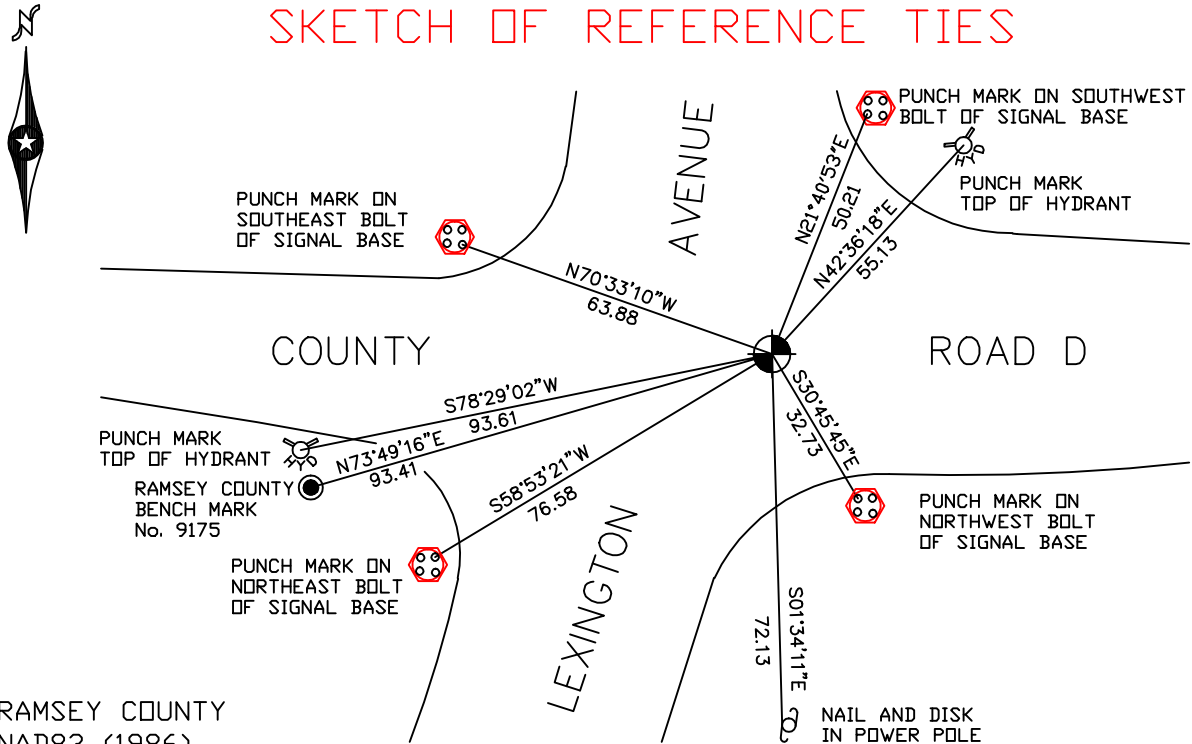
At the corner location shown on the sketch

On June 26, 2006 found a cast iron monument within a cast iron manhole assembly.

left monument as found lowered monument removed monument (explain)

On _____ placed a _____

SKETCH OF REFERENCE TIES



RAMSEY COUNTY
NAD83 (1986)

MONUMENT 309

X= 561111.358 (Easting)
Y= 189293.383 (Northing)

ALL DISTANCES ARE SHOWN IN U.S. SURVEY FEET.
BEARINGS ARE FOR TIE REFERENCE PURPOSES ONLY.

Statements of evidence relative to this corner are on the following page(s).

I hereby certify that this document and the data contained herein was prepared by me or under my direct supervision this _____ day of _____, 20____.

SIGNATURE

Minnesota License No. _____

County Surveyor Land Surveyor

OFFICE OF COUNTY SURVEYOR

County of Ramsey

I hereby certify that this document was filed in the County Surveyor's office on the ____ day of _____, 20____.

David D. Claypool, P.L.S., County Surveyor

By _____, Deputy

MONUMENT 309

Found 1/2 in. iron flush, July 29, 1974.

Found a granite monument, down 2 1/2 in., set a cast iron cap and bolt monument, June 3, 1975.

Retied monument, July 28, 1975.

Construction destroyed monument; set a 20 in. cast iron monument, September, 1980.

Tied monument, January 16, 1991.

Tied out monument and set a 20 in. cast iron monument, 1.5 ft. below grade, April 17 and 28, 1998.

Set cast iron manhole assembly over monument, May 27, 1998.

Tied monument, July 31, 1998.

Retied monument, June 26, 2006.