

# MONUMENT 305

## CERTIFICATE OF LOCATION OF GOVERNMENT CORNER

Northwest corner of Section 4, Township 29 North, Range 23 West, County of Ramsey, State of Minnesota.

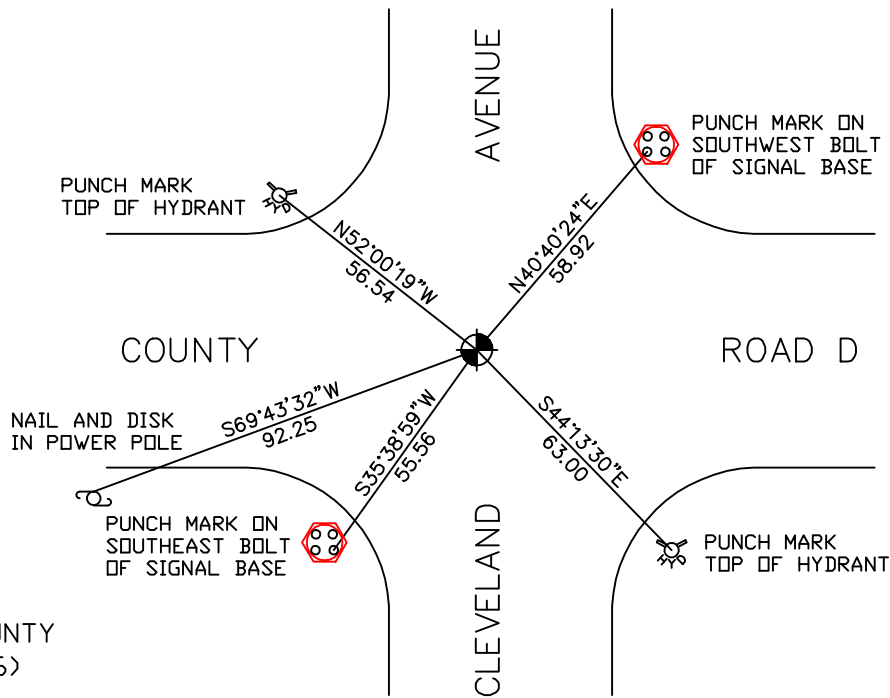
At the corner location shown on the sketch

On October 27, 2006 found a cast iron monument within a cast iron manhole assembly.

left monument as found     lowered monument     removed monument (explain)

On \_\_\_\_\_ placed a \_\_\_\_\_

### SKETCH OF REFERENCE TIES



RAMSEY COUNTY  
NAD83 (1986)  
MONUMENT 305

X= 550576.183 (Easting)  
Y= 189259.033 (Northing)

ALL DISTANCES ARE SHOWN IN U.S. SURVEY FEET.  
BEARINGS ARE FOR TIE REFERENCE PURPOSES ONLY.

Statements of evidence relative to this corner are on the following page(s).

I hereby certify that this document and the data contained herein was prepared by me or under my direct supervision this \_\_\_\_\_ day of \_\_\_\_\_, 20\_\_\_\_.

\_\_\_\_\_  
SIGNATURE

Minnesota License No. \_\_\_\_\_

County Surveyor     Land Surveyor

OFFICE OF COUNTY SURVEYOR  
County of Ramsey

I hereby certify that this document was filed in the County Surveyor's office on the \_\_\_\_ day of \_\_\_\_\_, 20\_\_\_\_.

David D. Claypool, P.L.S., County Surveyor

By \_\_\_\_\_, Deputy

## MONUMENT 305

**Found bolt, flush with surface, dug down 4.2 ft. found nothing. Set cast iron monument, October 31, 1975.**

**Retied monument, January 29, 1976.**

**Checked monument, May 9, 1977.**

**Found granite monument, down 0.05 ft., cast iron broken off, (cast iron was not in correct location); found old ties by F. Kvidera, checked remaining ties. Cast iron monument was approximately 1.0 ft. south, March 25, 1986.**

**Found bolt in granite monument, 0.2 ft. below surface and retied monument, March 10, 1989.**

**Granite monument to be destroyed by construction, tied monument, September 9, 1996.**

**Set 20 in. cast iron monument below grade, October 14, 1996.**

**Construction contractor set manhole assembly, October, 1996.**

**Tied monument, July 15, 2002.**

**Tied monument, October 27, 2006.**