

# MONUMENT 299

## CERTIFICATE OF LOCATION OF GOVERNMENT CORNER

Center of Section 36, Township 30 North, Range 22 West, County of Ramsey,  
State of Minnesota.

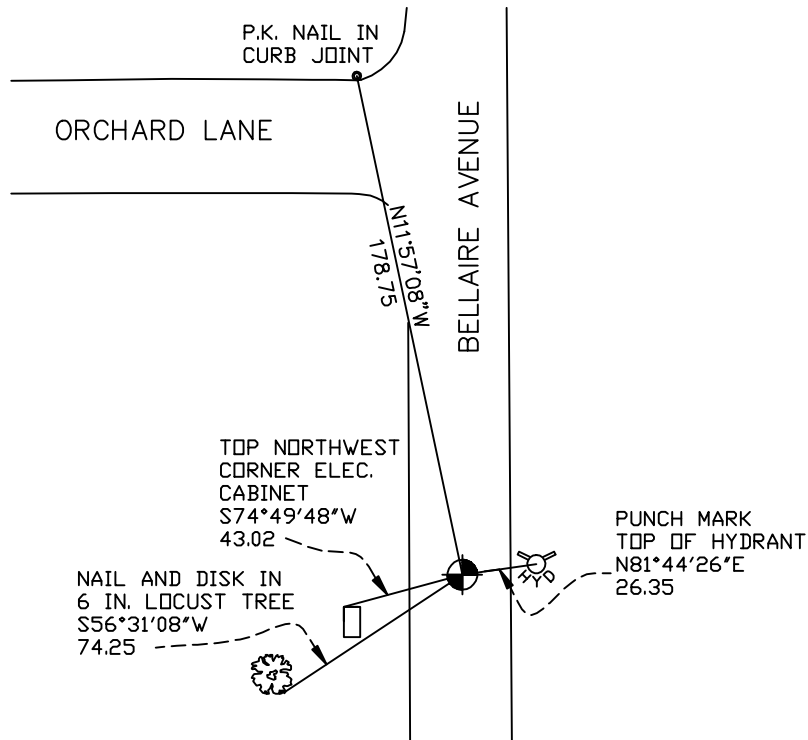
At the corner location shown on the sketch

On August 30, 2006 found a cast iron monument, flush.

left monument as found     lowered monument     removed monument (explain)

On \_\_\_\_\_ placed a \_\_\_\_\_

### SKETCH OF REFERENCE TIES



RAMSEY COUNTY  
NAD83 (1986)  
MONUMENT 299

X= 600394.278 (Easting)  
Y= 192084.594 (Northing)

ALL DISTANCES ARE SHOWN IN U.S. SURVEY FEET.  
BEARINGS ARE FOR TIE REFERENCE PURPOSES ONLY.

Statements of evidence relative to this corner are on the following page(s).

I hereby certify that this document and the data contained herein was prepared by me or under my direct supervision this \_\_\_\_\_ day of \_\_\_\_\_, 20\_\_\_\_.

SIGNATURE

Minnesota License No. \_\_\_\_\_

County Surveyor     Land Surveyor

OFFICE OF COUNTY SURVEYOR

County of Ramsey

I hereby certify that this document was filed in the County Surveyor's office on the \_\_\_\_ day of \_\_\_\_\_, 20\_\_\_\_.

David D. Claypool, P.L.S., County Surveyor

By \_\_\_\_\_, Deputy

## MONUMENT 299

**Found ½ in. i.d. pipe over a granite monument, down 0.45 ft., May 28, 1974.**

**Placed a short (4-½ in.) cast iron monument on top of granite monument, November 7, 1974.**

**Re-cemented cast iron monument, May 20, 1975.**

**Tied monument, June 15, 1990.**

**Removed monument for maintenance department, May 3, 1994.**

**Relocated position with P.K. nails, May 9, 1996.**

**Placed 20 in. cast iron monument, 1996.**

**Retied monument, September 30, 1999.**

**Retied monument, August 30, 2006.**