

MONUMENT 296E

CERTIFICATE OF LOCATION OF GOVERNMENT CORNER

A Witness Monument to the East Quarter Corner of Section 34, Township 30 North, Range 22 West, County of Ramsey, State of Minnesota.

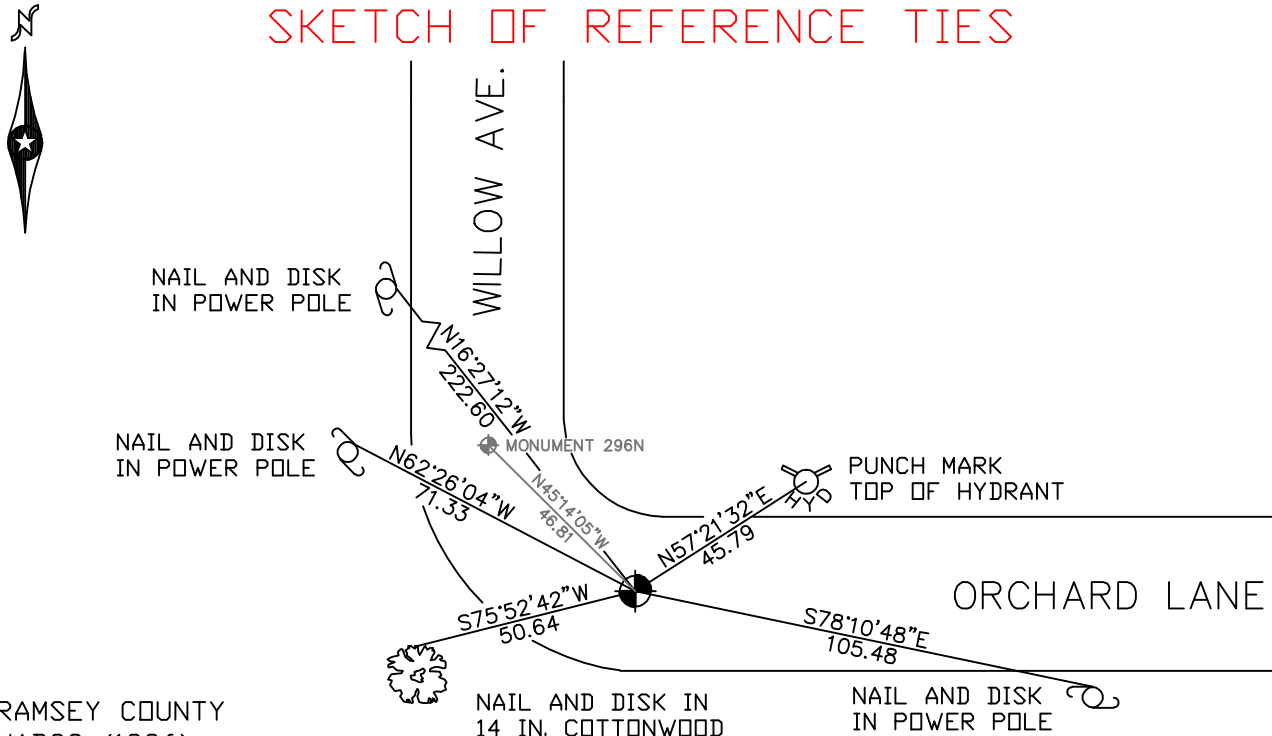
At the corner location shown on the sketch

On August 29, 2006 found a cast iron monument, flush.

left monument as found lowered monument removed monument (explain)

On _____ placed a _____

SKETCH OF REFERENCE TIES



RAMSEY COUNTY
NAD83 (1986)

MONUMENT 296E

X= 592515.241 (Easting)
Y= 192055.620 (Northing)

ALL DISTANCES ARE SHOWN IN U.S. SURVEY FEET.
BEARINGS ARE FOR TIE REFERENCE PURPOSES ONLY.

Statements of evidence relative to this corner are on the following page(s).

I hereby certify that this document and the data contained herein was prepared by me or under my direct supervision this _____ day of _____, 20____.

SIGNATURE

Minnesota License No. _____

County Surveyor Land Surveyor

OFFICE OF COUNTY SURVEYOR

County of Ramsey

I hereby certify that this document was filed in the County Surveyor's office on the ____ day of _____, 20____.

David D. Claypool, P.L.S., County Surveyor

By _____, Deputy

MONUMENT 296E

Found a manhole at corner location, see Survey Book #2, pages 1, 2 and 4, 1974.

Set a 20 in. cast iron monument, 33.00 ft. east, on line, 1975.

Retied monument, April 29, 1988.

**Monument destroyed by construction between 1988 and 1991,
position reestablished after traversing, 1992.**

Placed a 20 in. cast iron monument and tied, August 25, 1993.

Retied monument, November 13, 1998.

Cemented monument, September 9, 1999.

Retied monument, August 29, 2006.