

MONUMENT 292

CERTIFICATE OF LOCATION OF GOVERNMENT CORNER

West Quarter Corner of Section 33, Township 30 North, Range 22 West, County of Ramsey, State of Minnesota.

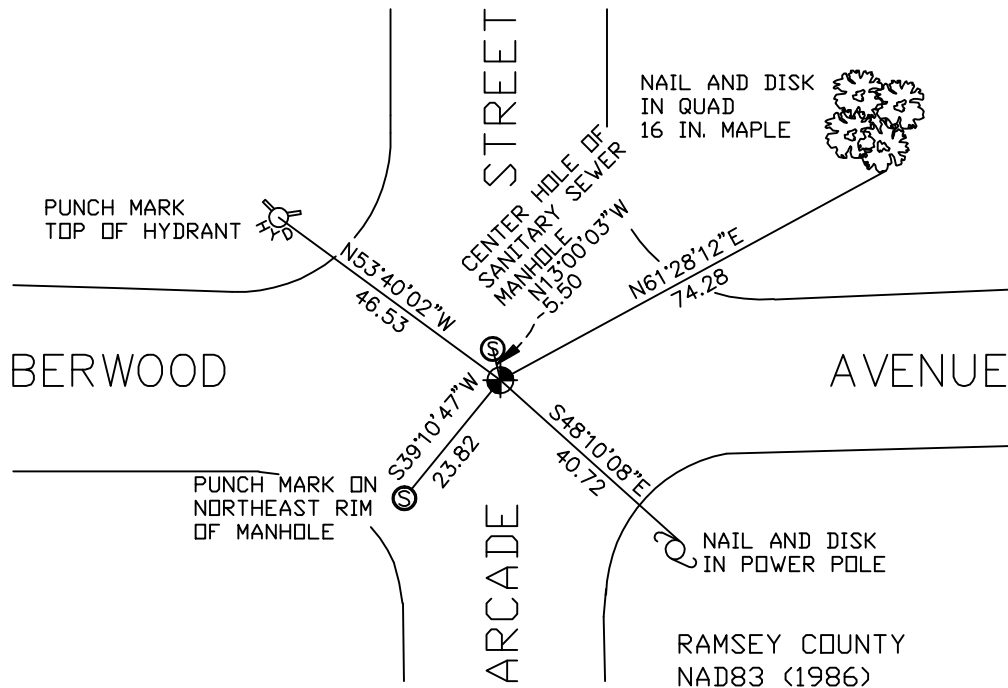
At the corner location shown on the sketch

On August 29, 2006 found a cast iron monument, flush.

left monument as found lowered monument removed monument (explain)

On _____ placed a _____

SKETCH OF REFERENCE TIES



RAMSEY COUNTY
NAD83 (1986)
MONUMENT 292

ALL DISTANCES ARE SHOWN IN U.S. SURVEY FEET.
BEARINGS ARE FOR TIE REFERENCE PURPOSES ONLY.

X= 581885.714 (Easting)
Y= 192039.653 (Northing)

Statements of evidence relative to this corner are on the following page(s).

I hereby certify that this document and the data contained herein was prepared by me or under my direct supervision this _____ day of _____, 20____.

SIGNATURE

Minnesota License No. _____

County Surveyor Land Surveyor

OFFICE OF COUNTY SURVEYOR

County of Ramsey

I hereby certify that this document was filed in the County Surveyor's office on the ____ day of _____, 20____.

David D. Claypool, P.L.S., County Surveyor

By _____, Deputy

MONUMENT 292

Granite monument missing, April, 1974.

Placed a cast iron monument, by using M.W. Carley and Associates, and Frank Kvidera (Co. Hwy. Dept.) ties, May 9, 1974.

Retied monument, February 12, 1991.

Monument broken off by City construction of Arcade Street to the north. Dug down and found bottom half of (Harrison) monument, tied and set P.K. nails, May 6, 1996.

Set a 20 inch cast iron monument, August 5, 1997.

Retied monument, August 29, 2006.

Concrete maintenance, September 26, 2006.