

MONUMENT 291

CERTIFICATE OF LOCATION OF GOVERNMENT CORNER

Center of Section 32, Township 30 North, Range 22 West, County of Ramsey,
State of Minnesota.

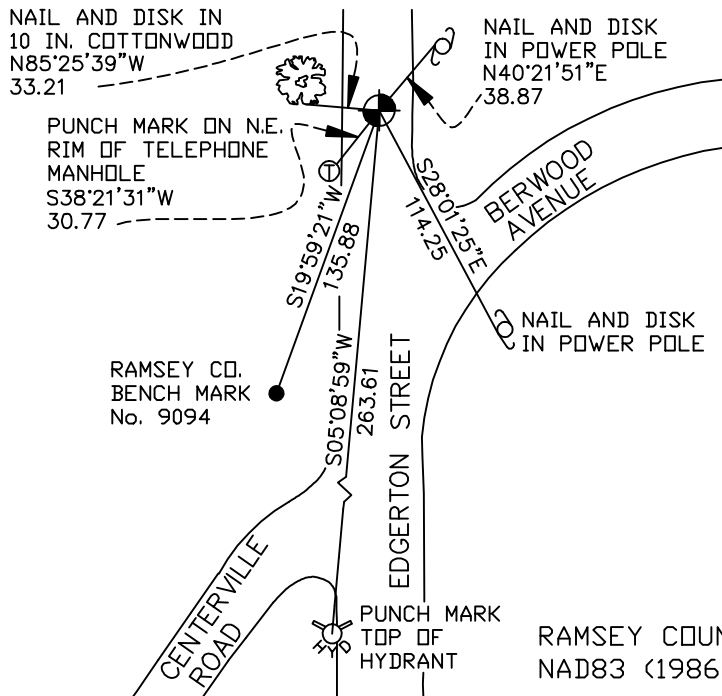
At the corner location shown on the sketch

On August 29, 2006 found a 1 1/2 inch iron pipe, down 0.3 feet.

left monument as found lowered monument removed monument (explain)

On _____ placed a _____

SKETCH OF REFERENCE TIES



RAMSEY COUNTY
NAD83 (1986)
MONUMENT 291
X= 579272.643 (Easting)
Y= 192039.756 (Northing)

ALL DISTANCES ARE SHOWN IN U.S. SURVEY FEET.
BEARINGS ARE FOR TIE REFERENCE PURPOSES ONLY.

Statements of evidence relative to this corner are on the following page(s).

I hereby certify that this document and the data contained herein was prepared by me or under my direct supervision this _____ day of _____, 20____.

SIGNATURE

Minnesota License No. _____

County Surveyor Land Surveyor

OFFICE OF COUNTY SURVEYOR

County of Ramsey

I hereby certify that this document was filed in the County Surveyor's office on the ____ day of _____, 20____.

David D. Claypool, P.L.S., County Surveyor

By _____, Deputy

MONUMENT 291

Found 1.5 in. diameter iron down 0.4 ft. in old concrete pavement; placed cast iron cap and 3 in. bolt monument in concrete, flush, May 24, 1974.

Retied monument, August 13, 1975.

Retied monument, January, 1983.

Cast iron cap monument gone. Found 1.5 in. diameter iron down +/- 0.3 ft. and retied, December 3, 1998.

Retied 1.5 in. diameter iron monument, August 29, 2006.