

MONUMENT 280

CERTIFICATE OF LOCATION OF GOVERNMENT CORNER

West Quarter Corner of Section 33, Township 30 North, Range 23 West, County of Ramsey, State of Minnesota.

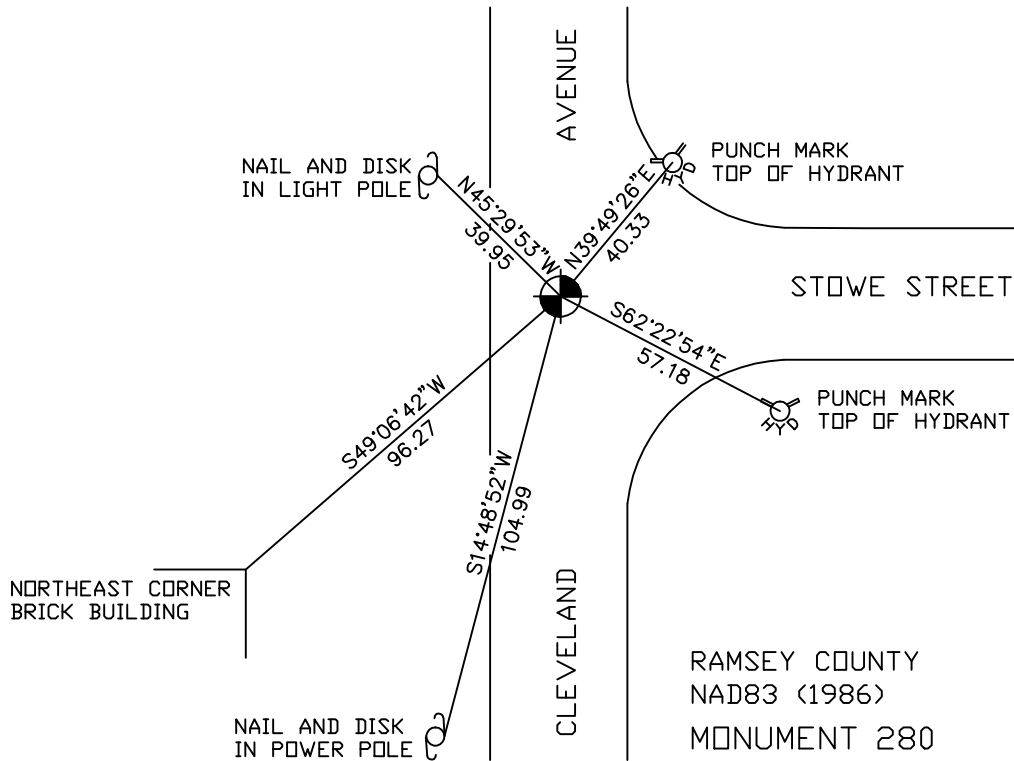
At the corner location shown on the sketch

On October 27, 2006 found a cast iron monument, flush.

left monument as found lowered monument removed monument (explain)

On _____ placed a _____

SKETCH OF REFERENCE TIES



ALL DISTANCES ARE SHOWN IN U.S. SURVEY FEET.
BEARINGS ARE FOR TIE REFERENCE PURPOSES ONLY.

RAMSEY COUNTY
NAD83 (1986)
MONUMENT 280

X= 550568.879 (Easting)
Y= 191874.182 (Northing)

Statements of evidence relative to this corner are on the following page(s).

I hereby certify that this document and the data contained herein was prepared by me or under my direct supervision this _____ day of _____, 20____.

SIGNATURE

Minnesota License No. _____

County Surveyor Land Surveyor

OFFICE OF COUNTY SURVEYOR

County of Ramsey

I hereby certify that this document was filed in the County Surveyor's office on the ____ day of _____, 20____.

David D. Claypool, P.L.S., County Surveyor

By _____, Deputy

MONUMENT 280

Found granite monument down 3 in. and retied, July 30, 1974.

Set cast iron cap monument over granite monument, May 9, 1977.

Cast iron cap monument gone, granite monument still in place, November 24, 1981.

Granite monument removed by maintenance, June, 1989.

Placed P.K. nail, checked ties and traverse distances, April 23, 1990.

Set 20 in. cast iron monument, June, 1990.

Tied monument, June 14, 2002.

Tied monument, October 27, 2006.