

MONUMENT 266

CERTIFICATE OF LOCATION OF GOVERNMENT CORNER

South Quarter Corner of Section 29, Township 30 North, Range 22 West,
County of Ramsey, State of Minnesota.

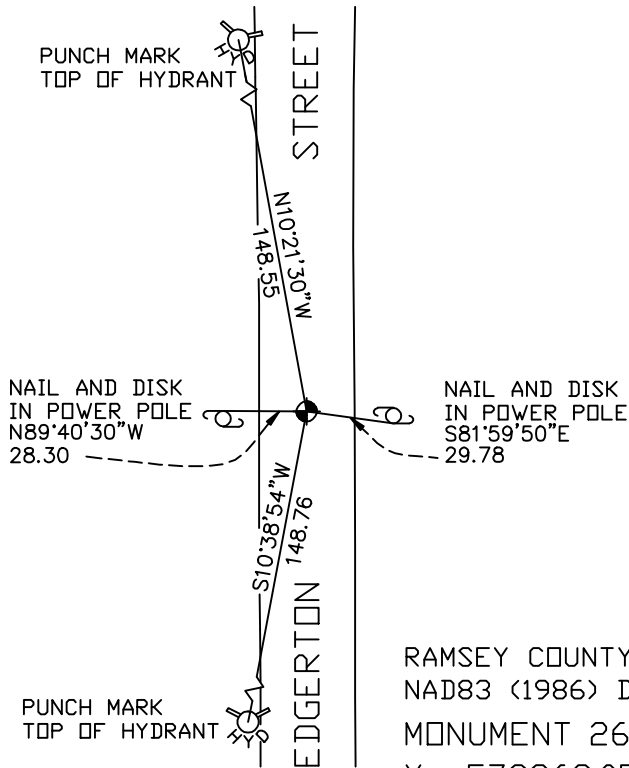
At the corner location shown on the sketch

On August 29, 2006 found a cast iron monument, flush.

left monument as found lowered monument removed monument (explain)

On _____ placed a _____

SKETCH OF REFERENCE TIES



RAMSEY COUNTY
NAD83 (1986) DATUM
MONUMENT 266

X = 579263.057 (Easting)
Y = 194668.703 (Northing)

ALL DISTANCES ARE SHOWN IN U.S. SURVEY FEET.
BEARINGS ARE FOR TIE REFERENCE PURPOSES ONLY.

Statements of evidence relative to this corner are on the following page(s).

I hereby certify that this document and the data contained herein was prepared by me or under my direct supervision this _____ day of _____, 20____.

SIGNATURE

Minnesota License No. _____

County Surveyor Land Surveyor

OFFICE OF COUNTY SURVEYOR

County of Ramsey

I hereby certify that this document was filed in the County Surveyor's office on the ____ day of _____, 20____.

David D. Claypool, P.L.S., County Surveyor

By _____, Deputy

MONUMENT 266

Found granite monument, down 0.5 ft., April, 1974.

Set short cast iron monument over granite monument and retied, July 31, 1975.

Retied monument, removed cast iron monument, May 13, 1991.

Relocated position and checked ties, September 27, 1991.

Set 20 in. cast iron monument, October 14, 1992.

Retied monument, December 8, 2000.

Retied monument, August 29, 2006.