

# MONUMENT 266N

## CERTIFICATE OF LOCATION OF GOVERNMENT CORNER

Center South Sixteenth Corner of the Southwest Quarter of Section 29,  
Township 30 North, Range 22 West, County of Ramsey, State of Minnesota.

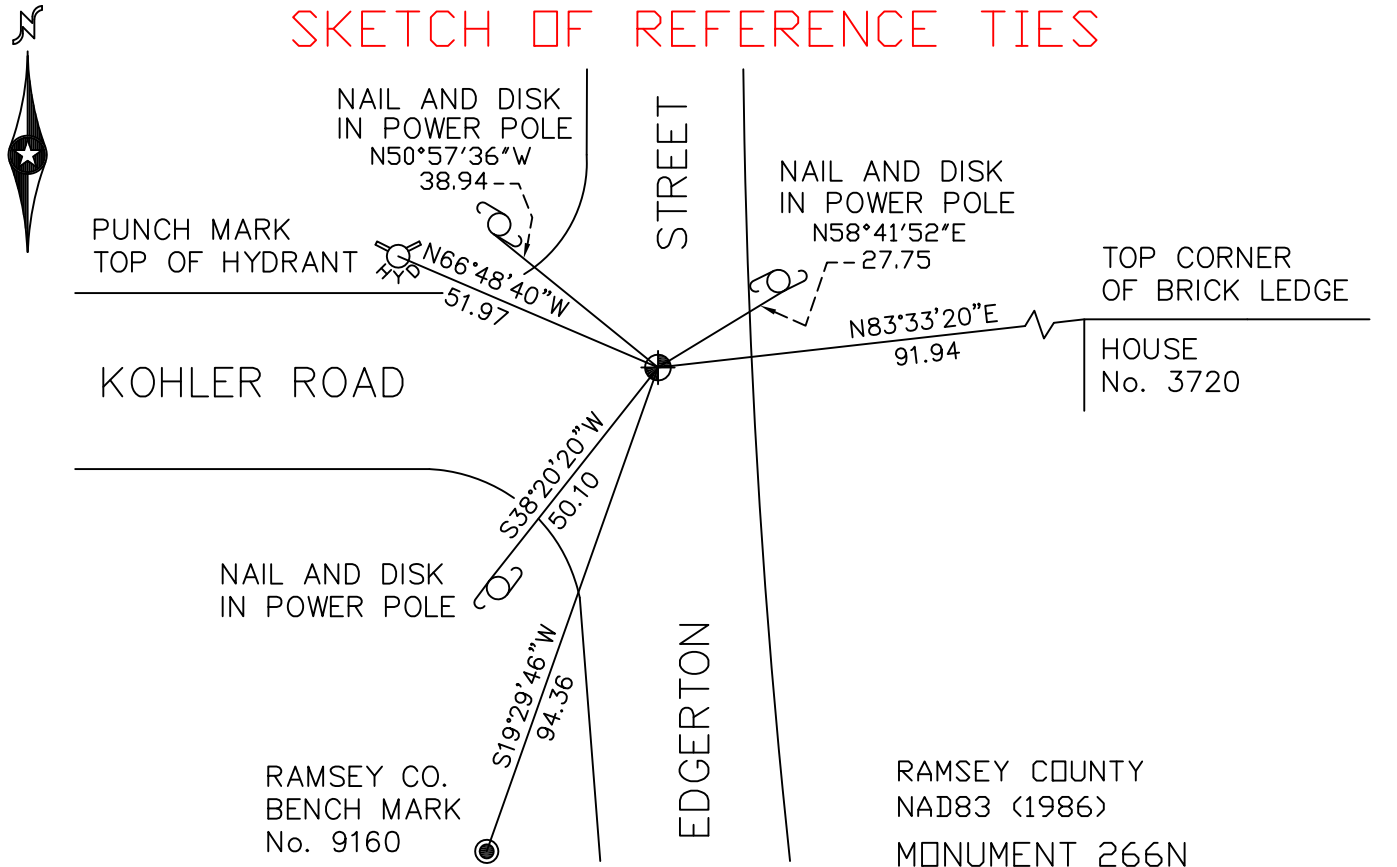
At the corner location shown on the sketch

On August 29, 2006 found a cast iron monument, flush.

left monument as found     lowered monument     removed monument (explain)

On \_\_\_\_\_ placed a \_\_\_\_\_

### SKETCH OF REFERENCE TIES



ALL DISTANCES ARE SHOWN IN U.S. SURVEY FEET.  
BEARINGS ARE FOR TIE REFERENCE PURPOSES ONLY.

RAMSEY COUNTY  
NAD83 (1986)  
MONUMENT 266N  
X= 579264.974 (Easting)  
Y= 195987.808 (Northing)

Statements of evidence relative to this corner are on the following page(s).

I hereby certify that this document and the data contained herein was prepared by me or under my direct supervision this \_\_\_\_\_ day of \_\_\_\_\_, 20\_\_\_\_.

SIGNATURE

Minnesota License No. \_\_\_\_\_

- County Surveyor  
 Deputy County Surveyor     Land Surveyor

#### OFFICE OF COUNTY SURVEYOR

County of Ramsey

I hereby certify that this document was filed in the County Surveyor's office on the \_\_\_\_ day of \_\_\_\_\_, 20\_\_\_\_.

David D. Claypool, P.L.S., County Surveyor

By \_\_\_\_\_, Deputy

# MONUMENT 266N

Found a cast iron monument and tied, April, 1974.

Retied monument and removed, May 13, 1991.

Relocated position and checked ties, September 27, 1991.

Set a 20 in. cast iron monument, October 14, 1992.

Tied monument, December 8, 2000.

Retied monument, August 29, 2006.