

# MONUMENT 254

## CERTIFICATE OF LOCATION OF GOVERNMENT CORNER

South Quarter Corner of Section 29, Township 30 North, Range 23 West,  
County of Ramsey, State of Minnesota.

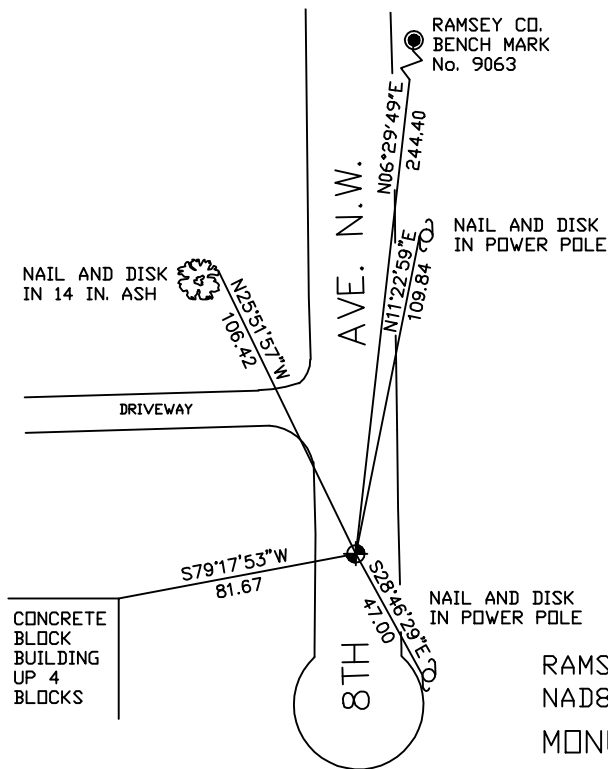
At the corner location shown on the sketch

On August 29, 2006 found a cast iron monument, flush.

left monument as found     lowered monument     removed monument (explain)

On \_\_\_\_\_ placed a \_\_\_\_\_

### SKETCH OF REFERENCE TIES



RAMSEY COUNTY  
NAD83 (1986)  
MONUMENT 254

ALL DISTANCES ARE SHOWN IN U.S. SURVEY FEET.  
BEARINGS ARE FOR TIE REFERENCE PURPOSES ONLY.

X= 547906.455 (Easting)  
Y= 194514.345 (Northing)

Statements of evidence relative to this corner are on the following page(s).

I hereby certify that this document and the data contained herein was prepared by me or under my direct supervision this \_\_\_\_\_ day of \_\_\_\_\_, 20\_\_\_\_.

SIGNATURE

Minnesota License No. \_\_\_\_\_

County Surveyor     Land Surveyor

OFFICE OF COUNTY SURVEYOR

County of Ramsey

I hereby certify that this document was filed in the County Surveyor's office on the \_\_\_\_ day of \_\_\_\_\_, 20\_\_\_\_.

David D. Claypool, P.L.S., County Surveyor

By \_\_\_\_\_, Deputy

## MONUMENT 254

**Found granite monument, down 0.18 ft., placed cast iron cap and bolt monument, October 31, 1975.**

**Retied monument, February 13, 1976.**

**Retied monument, June 18, 1991.**

**Granite monument removed by city construction, August 11, 1998.**

**Traversed, set P.K. nail in monument location, March 12, 1999.**

**Set 20 in. cast iron monument flush, October, 1999.**

**Retied monument, March 19, 2001.**

**Retied monument, August 29, 2006.**